

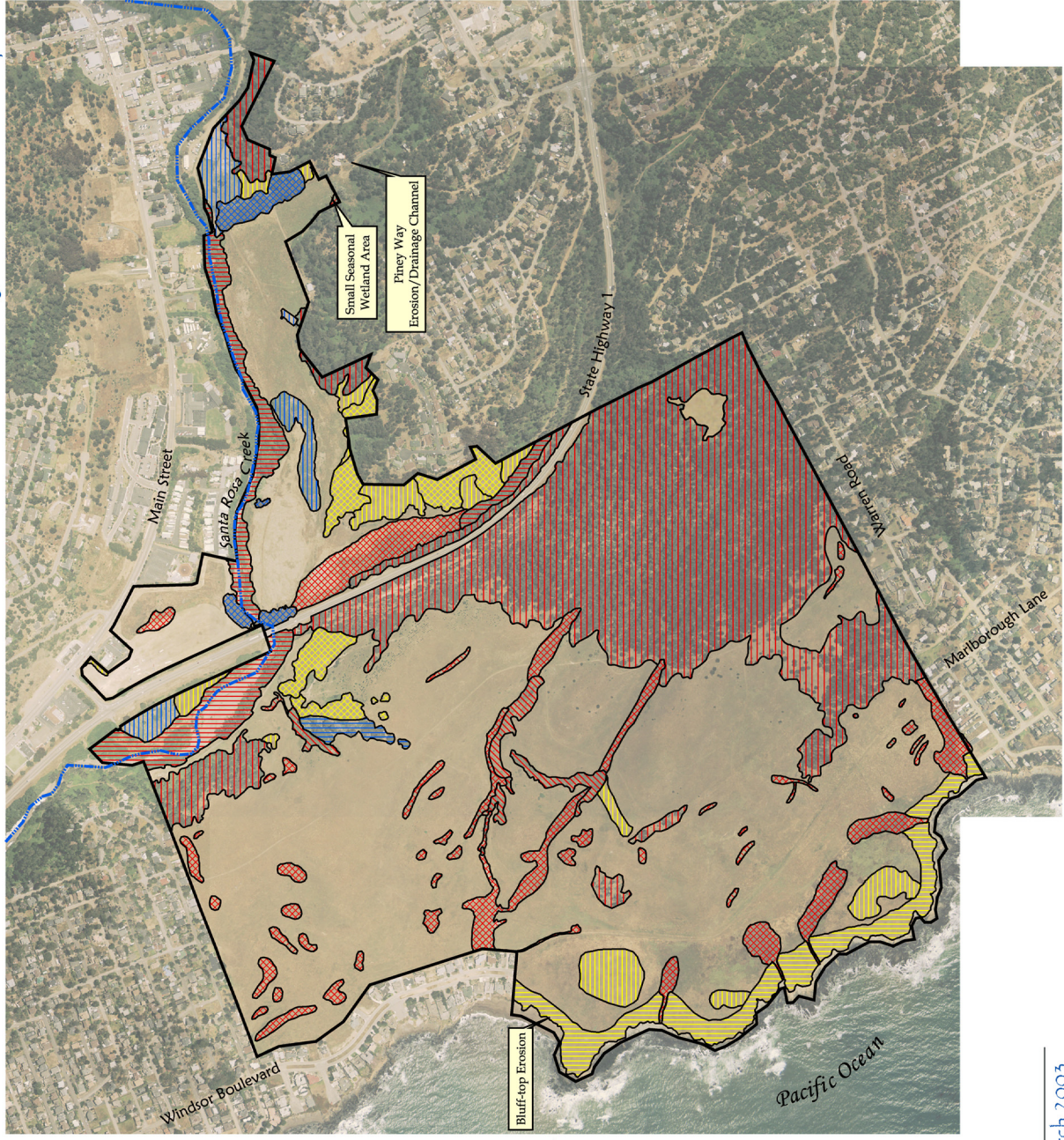
East-West Ranch

Cambria California

Resource Inventory and Constraints Report

Legend

- Property Boundary
- Santa Rosa Creek
- Severe Constraints**
- Riparian: A, B, C, D, E, F, G, I, J, L
- Seasonal Wetland: A, B, C, D, L, N
- Monterey Pine: I, J, K, L, N
- Riparian Scrub: A, B, C, D, J, L
- Moderate Constraints**
- Seabluff Scrub: H, J, N
- Oak/Toyon: I, J, N
- Coastal Scrub: H, J, N
- Grassland: I, M, N
- Minor Constraints**
- Monterey Cypress: I
- Eucalyptus: A, I
- Ruderal: J



- A. County of San Luis Obispo: 50-foot creek and 100-foot wetland setback (per Sections 23.07.172 and 23.07.174 of the County Land Use Ordinance: Coastal Development permit)
 - B. Potential California Department of Fish and Game (CDFG) jurisdiction over activities affecting drainage channels and riparian vegetation (Section 1600 Streambed Alteration Agreement)
 - C. Potential U.S. Army Corps of Engineers (Corps) jurisdiction over waters of the U.S. and wetlands (Corps Delineation and Section 404 permit)
 - D. California red-legged frog habitat (United States Fish and Wildlife Service consultation)
 - E. Southern steelhead and tidewater goby habitat (USFWS/National Marine Fisheries Service consultation)
 - F. Potential southwestern pond turtle and two-striped garter snake habitat (County and CEQA review)
 - G. Potential bank swallow habitat (County and CEQA review; USFWS consultation)
 - H. Potential silver legless lizard habitat (County and CEQA review)
 - I. Potential nesting/roosting habitat for migratory bird species and "birds-of-prey" (County and CEQA review; USFWS consultation; DFG Code 3503 and 3503.5)
 - J. Potential song bird nesting habitat (County and CEQA review; DFG Code 3503)
 - K. Potential roosting habitat for Monarch butterfly (County and CEQA review)
 - L. Rare vegetation community per the California Natural Diversity Database (County and CEQA review)
 - M. Potential occurrences of native perennial grassland (County and CEQA review)
 - N. Potential habitat for rare plant species (County and CEQA review)
- note: Eucalyptus Habitat at intersection of Santa Rosa Creek and Highway 1 may be considered jurisdictional by the California Department of Fish and Game (Constraint B).



Biological Constraints

Exhibit 3

March 2003