

# SKATEPARK DESIGN WORKSHOP



Presented To:  
CCSD – CAMBRIA CALIFORNIA



# AARON SPOHN – SKATEPARK PROFESSIONAL



## PROJECT PLANNING, DEVELOPEMENT & FACILITY MANAGEMENT

- Designer, Builder and Advocate
- 45+ years skateboarding, 29 years in skatepark industry
- Educational speaker at 50+ parks & recreation conferences
- Original member ASTM sub-committee establishing safety guidelines for public skateparks
- Founder of the APA, Skatepark Management, Grand Prairie, TX



# IMPORTANCE EXPERIENCE

Skatepark Safety Standards



ASTM INTERNATIONAL

Skatepark Management Program



ACTION PARK ALLIANCE

# SPOHN RANCH SELECT PROJECTS



# SKATE PARK INITIATIVE

**SKATE INSPIRED, YOUTH DRIVEN AND COMMUNITY  
SUPPORTED!**

[DONATE TODAY](#)

[COLLECT SIGNATURES](#)

**THANK YOU FOR SUPPORTING...  
HELP US SKATE-ROSES FOR YOUR DATE A SUCCESS!!!!  
WE SOLD OUT AND RAISED \$1800.00 DOLLARS FOR THE SKATEPARK  
SPECIAL THANK YOU TO LINN'S RESTAURANT FOR HOSTING US  
STAY TUNED FOR OUR NEXT EVENT. WE APPRECIATE YOU!**



**WE WOULD LIKE TO THANK ALL OF THOSE THAT SUPPORTED AND VOLUNTEERED FOR THE PANCAKE PLATE SO YOU CAN SKATE BREAKFAST!**

**WE SOLD OUT and MADE \$4500.00 IN PROFIT FOR THE PARK...**

# SUPPORT OUR YOUTH



3000

PETITION SIGNATURES

\$163001

MONEY RAISED

# PHASE 1 SKATEPARK DESIGN

- Conduct site survey (topo map) and soils testing
- Gather user ideas and information
- Develop a conceptual/schematic design
- Create renderings
- Create ROM Rough Order of Magnitude, Estimate of Cost (plus or minus 40%)
- Inform grant and fund-raising efforts





[MY ITINERARY](#)

[BOOK NOW](#)



[MENU](#)

# Safe Travels

*Cambria: a place where you  
can escape from it all*

What does Cambria mean to you?

# BEYOND A SKATEPARK

- Cambria skatepark initiative

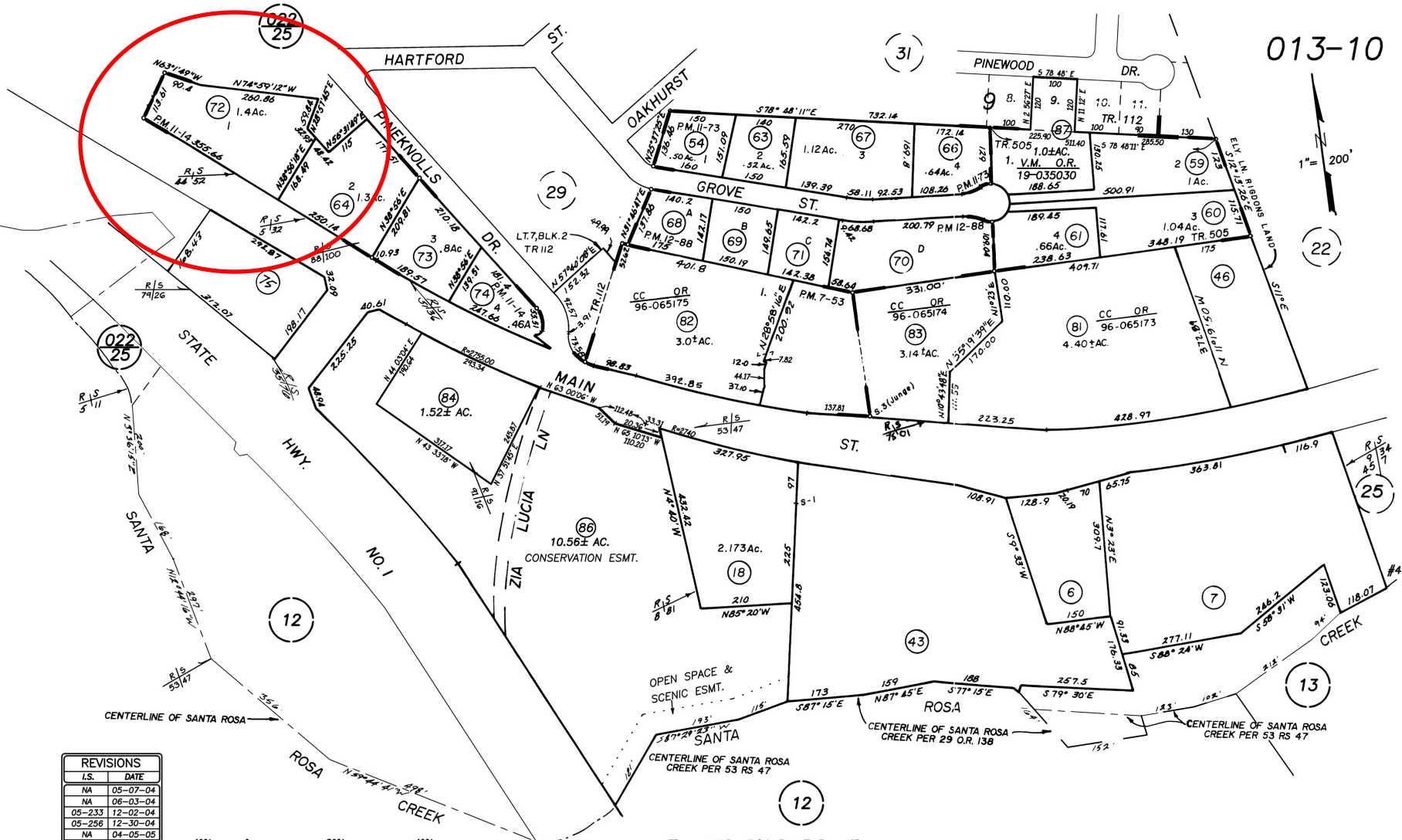
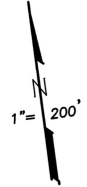
- Skate Cambria is looking to build a skatepark that has a mix of street and transition features that will support skaters with a range of interests and abilities.
- The park needs to be a modern concrete skatepark that requires little maintenance and will last for generations to come.
- Beyond a skatepark, this will be a space that encourages event gatherings and captures the uniqueness of our beautiful community.
- To ensure that the end result fulfills this vision, Skate Cambria is dedicated to ensuring that skaters of all ages and that the wider community input is considered throughout the project.



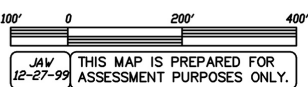
Google



PRIVATE TO SKATE



REVISIONS	
I.S.	DATE
NA	05-07-04
NA	06-03-04
05-233	12-02-04
05-256	12-30-04
NA	04-05-05
05-486	06-09-05
NA	01-14-08
20-118	02-11-20



Tract 112, R.M. BK.5, Pg.113  
 Pineknolls Terrace, Tr. 505, R. M. Bk.8, Pg.54  
 RANCHO SANTA ROSA, PATENT BK. A, PG. 42.

**CAMBRIA**  
 ASSESSOR'S MAP, COUNTY OF  
 SAN LUIS OBISPO, CA.  
 BOOK 013 PAGE 10



PROJECT TITLE  
**CAMBRIA, CA**

SHEET TITLE  
**BASE MAP**

SHEET

**SPOHN RANCH**  
**SKATE PARKS**

**SR**

**DESIGN BUILD COLLABORATIVE**  
 1000 W. BROADWAY, SUITE 100  
 CAMBRIDGE, CA 95923  
 OFFICE (916) 335-5851 • FAX (916) 335-5853

The user shall accept responsibility for the accuracy of the information provided in this map. The user shall not rely on this map for any purpose other than that for which it was prepared. This map is not intended to be used for any other purpose. The user shall not be held liable for any consequences arising from the use of this map. © 2012 Design Build Collaborative, Inc.

Parcel boundary



PROJECT TITLE  
**CAMBRIA, CA**

SHEET TITLE  
**BASE MAP**

SHEET

The user of these plans shall be responsible for determining the applicability of these plans to the project. The user shall verify the accuracy of the information provided on these plans and shall be responsible for obtaining all necessary permits and approvals. The user shall be responsible for obtaining all necessary permits and approvals. The user shall be responsible for obtaining all necessary permits and approvals.

**SPOHN RANCH  
 SKATE PARKS**

**DESIGN BUILD COLLABORATIVE**  
 10000 SPOHN RANCH DRIVE, SUITE 100  
 CAMBRIA, CA 95923  
 OFFICE (916) 336-5851 • FAX (916) 336-5853

Original park boundary

# PROJECT UNDERSTANDING

- The proposed skatepark location is in the same as original
- Being located at the base of a bluff shedding debris and stormwater run off will need to be addressed
- Located adjacent to public library
- Ample street parking
- Has portable restroom
- Funding sources (private donations, grant funding, district general funds??)
- Strong Community support
- Prominent location (visually)
- Target size of 8k sf



# REQUIREMENTS & ENHANCEMENTS

- Stormwater capture and infiltration
- Site expansion/retaining walls
- ADA parking and access path
- Seating (ADA)/Spectator Area/Event Area/Stage
- Shade structure/Pavilion
- Paved parking (off-street)
- Restroom (allocate space for future addition)
- Fencing
- Lighting/Power outlets/Security Camera
- Landscaping
- Colored concrete
- Art and sculpture

# REGIONAL SKATEPARK OVERVIEW

- Planning with other regional parks in mind
- Understanding the benefits or impacts when adding to the larger system

# Cambria Area Skateparks

2 views

All changes saved in Drive

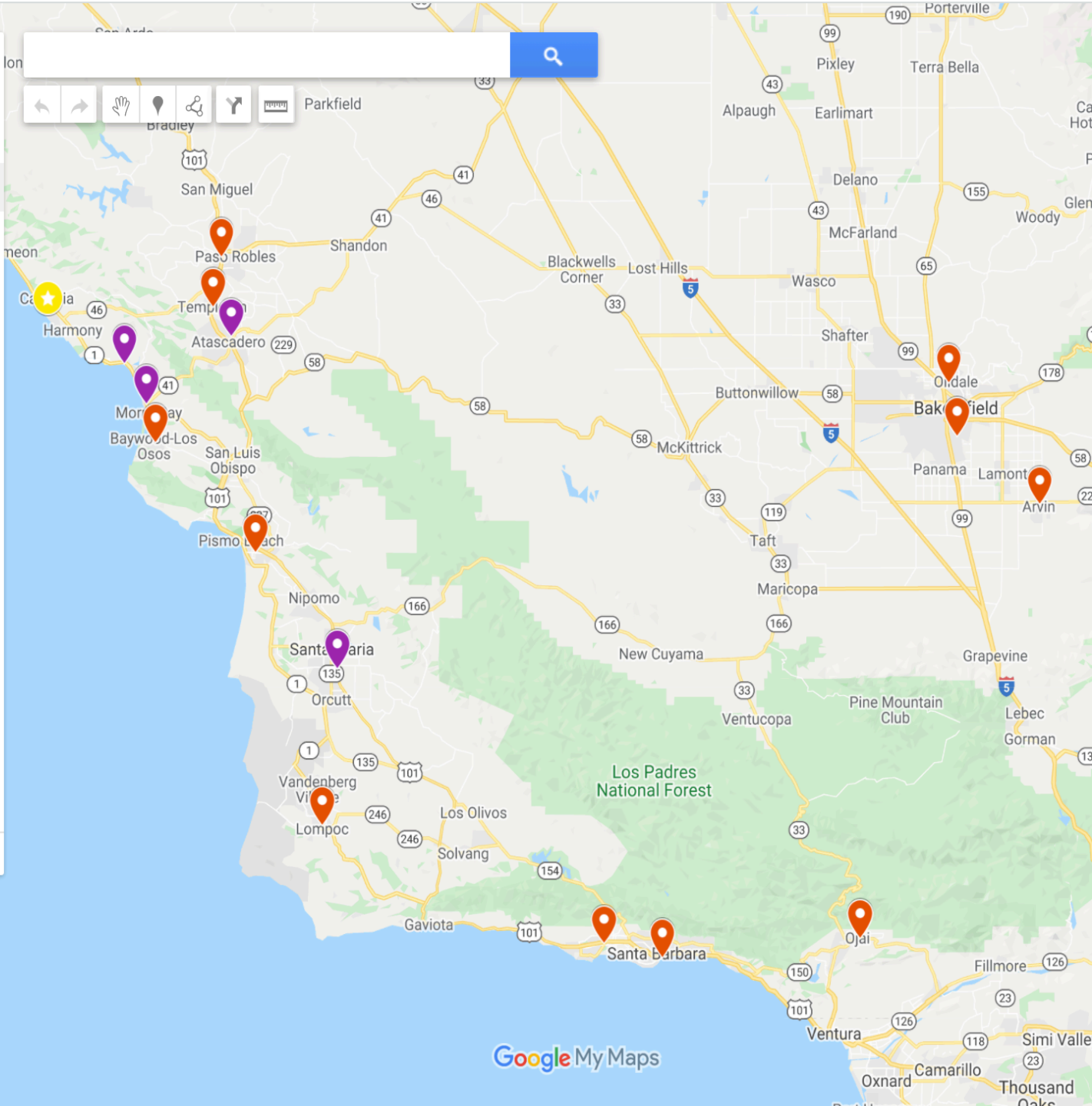
Add layer Share Preview

## Untitled layer

Individual styles

- Cambria
- Cayucos Skatepark
- Morro Bay Skatepark
- Templeton Skatepark
- Los Osos Skatepark
- A-Town Skatepark (private)
- Paso Robles Skatepark
- Grover Beach Skatepark
- Santa Maria Skatepark
- Lompoc Skatepark
- Goleta Skatepark
- Santa Barbara Skatepark
- Bakersfield Skatepark
- Oildale Skatepark
- Arvin Skatepark
- Ojai Skatepark

Base map





# Cayucos, California



# Morro Bay, California



[www.northwestskater.com](http://www.northwestskater.com)



# Templeton, California

# Los Osos Skatepark, CA





# Paso Robles, California



# Grover Beach, California



[www.northwestskater.com](http://www.northwestskater.com)

# Santa Maria, California (Fletcher Park)



[www.northwestskater.com](http://www.northwestskater.com)

# Lompoc, California



[www.northwestskater.com](http://www.northwestskater.com)

# Santa Barbara Skatepark, CA



# DESIGN PROCESS – COMMUNITY OUTREACH



SHARE YOUR VOICE AT THE  
**TEMECULA SKATEPARK DESIGN WORKSHOP**  
THURSDAY **AUG 28TH**  
6:00 PM

**OPEN TO THE PUBLIC WE WANT YOUR OPINION**  
TELL US WHAT YOU'D LIKE TO SEE AT THE TSP!  
SKATEBOARD, SCOOTER, AND BMX RIDERS ALL WELCOME

**TEMECULA CRC ( MULTIPURPOSE ROOM )**  
30875 RANCHO VISTA ROAD

\* REFRESHMENTS PROVIDED  
CALL 951-695-1409 FOR QUESTIONS



SHARE YOUR VOICE AT THE  
**CARLTON SKATEPARK DESIGN WORKSHOP**

**WEDNESDAY FEB. 4TH, 2015 AT 6:00PM**  
**OPEN TO THE PUBLIC - WE WANT YOUR OPINION**  
TELL US WHAT YOU'D LIKE TO SEE AT THE CARLTON SKATEPARK!

**MEETING HELD AT FARMERS' PLATE & PANTRY**



**119 W MAIN ST**  
**CARLTON, OR 97111**

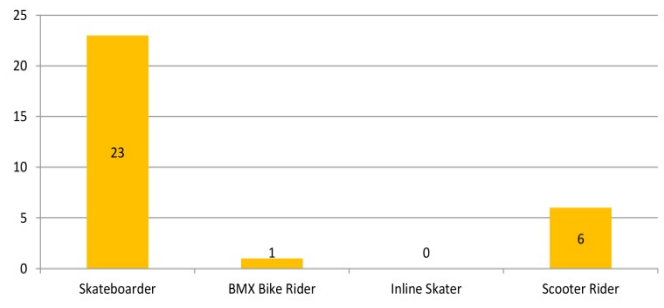
# DESIGN PROCESS – USERS SURVEYS



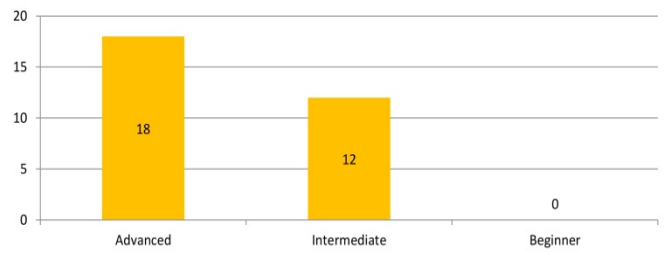
DESIGN. BUILD. COME TOGETHER.

SOUTH BRANCH PARK SKATEPARK – TOWN OF SYKESVILLE, MD  
USER INPUT SUMMARY  
OCTOBER 31, 2014

## WHAT IS YOUR WHEELED SPORT OF CHOICE?

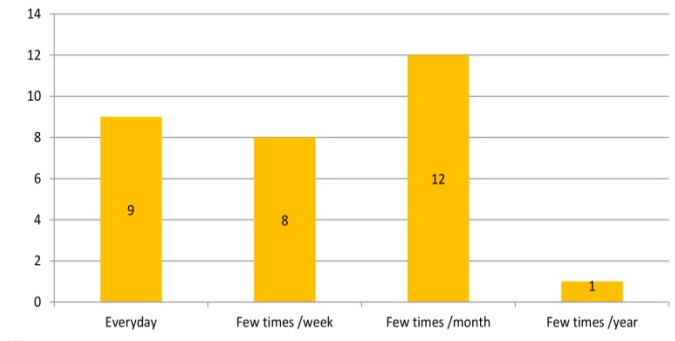


## HOW WOULD YOU RATE YOUR SKILL/EXPERIENCE LEVEL?

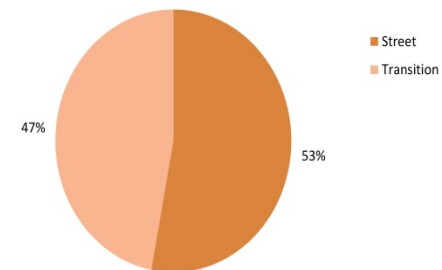


DESIGN. BUILD. COME TOGETHER.

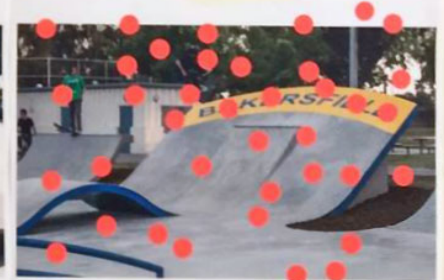
## HOW OFTEN WOULD YOU USE THE NEW SKATEPARK?



## WHAT IS YOUR PREFERRED RATIO OF STREET/PLAZA TO TRANSITION/BOWL?



# FEATURE RANKING





# STREET / SKATE PLAZA STYLE TERRAIN



TRAVIS AUBREY SKATE PLAZA – OWENSBORO, KY

# TRANSITION / BOWL / PARK STYLE TERRAIN



HANSEN DAM FLOW BOWL – LOS ANGELES, CA

# PUMP TRACK/FLOW/SURF STYLE TERRAIN



PHR PUMP TRACK – SAN DIEGO, CA

# ESTIMATING COST – ROUGH ORDER OF MAGNITUDE

## PUBLIC SKATEPARK DEVELOPMENT GUIDE

BROUGHT TO YOU BY



[Home](#) › [Fundraising](#) › How Much Do Skateparks Cost?

## How Much Do Skateparks Cost?

This is a complex question whose answer depends largely on what kind of skatepark you're talking about. It's kind of like asking, "how much does a car cost?" There are two costs associated with skateparks. The first expense is the cost to design and build the facility. The second expense is the cost of maintaining and operating that facility over a period of time. (These expenses together are considered the "total cost of ownership," or "TCO.")

Most of the time when someone asks how much it will cost, they're specifically asking about the cost of construction. (Construction, for the average person, will include the cost of design.) People familiar with park development—particularly those within the Parks Department—will also want to know how much the skatepark will cost each year in maintenance. ([Skatepark maintenance](#) is covered elsewhere.)

Square-foot size of skatepark X \$45

=

Skatepark Creation Cost Estimate

+/- Project Cost Factors

The average price to design and build a skatepark is \$45 per square foot. Skateparks rarely are more than \$60 per square foot, and can sometimes be as low as \$25 per square foot.

At the average cost of \$45 per square foot:

- A 3,000 square foot skate spot will be \$135,000 and will support a few skaters at a time.
- An 8,000 square foot neighborhood skatepark will be \$360,000 and will serve a neighborhood of about 25,000 residents.
- A 16,000 square foot regional skatepark will be \$720,000 and will service the immediate neighborhood and attract patrons from the region.

As a reasonable starting point we'll use \$450,000 for a 10,000 square foot skatepark.

### This Section

- [↑ Fundraising](#)
- [Wrapping Up Fundraising](#)
- [Skatepark Budget](#)
- [Sample Donor Solicitation](#)
- [Protecting the Skatepark Funds](#)
- [Parks Revenue](#)
- [Nonprofits and Fiscal Sponsors](#)
- [How Much Do Skateparks Cost?](#)
- [Grassroots Fundraising](#)
- [Fundraising Strategy](#)
- [Formal and Informal Agreements](#)
- [Concept Designs for Fundraising](#)
- [Comparative Costs](#)
- [Capital Improvements Overview](#)

THF – Estimates average skatepark constructions at \$45 \$50 per square foot.

# “Brattleboro skatepark price could jump \$80K”

- Tony Hawk Foundation has estimated that construction will cost \$46 a square foot.
- "Stantec is at \$50 up to \$70 (a square foot)," he said. "There's a disconnect between these two groups but we did our homework throughout the years and made sure we've put our best foot forward. I've never built a skatepark before in my life, but this is where we sit."
- "We will be pulling out what we see as not needed, considering what they gave us for things listed"



10 years of fund raising netted \$230,000 for skatepark construction

A 5000 sf. design was developed with an expected construction cost of \$46 psf

Contractor estimating put actual costs at \$62 psf

Design went through a value engineering process and the Town Board approved additional \$60,000.

Final bid awarded \$281,935 in March 2020 at \$56.5 psf

Project delayed by 18 months

# PRESERVERANCE SKATEPARK

## Brattleboro, Vermont



SKATEBOARDING

IS NOT A CRIME









# THE CHANGING FACE OF SKATERS



# PINK HELMET POSSE



BELLA KENWORTHY



CHANGING PERCEPTIONS

# BELLA KENWORTHY

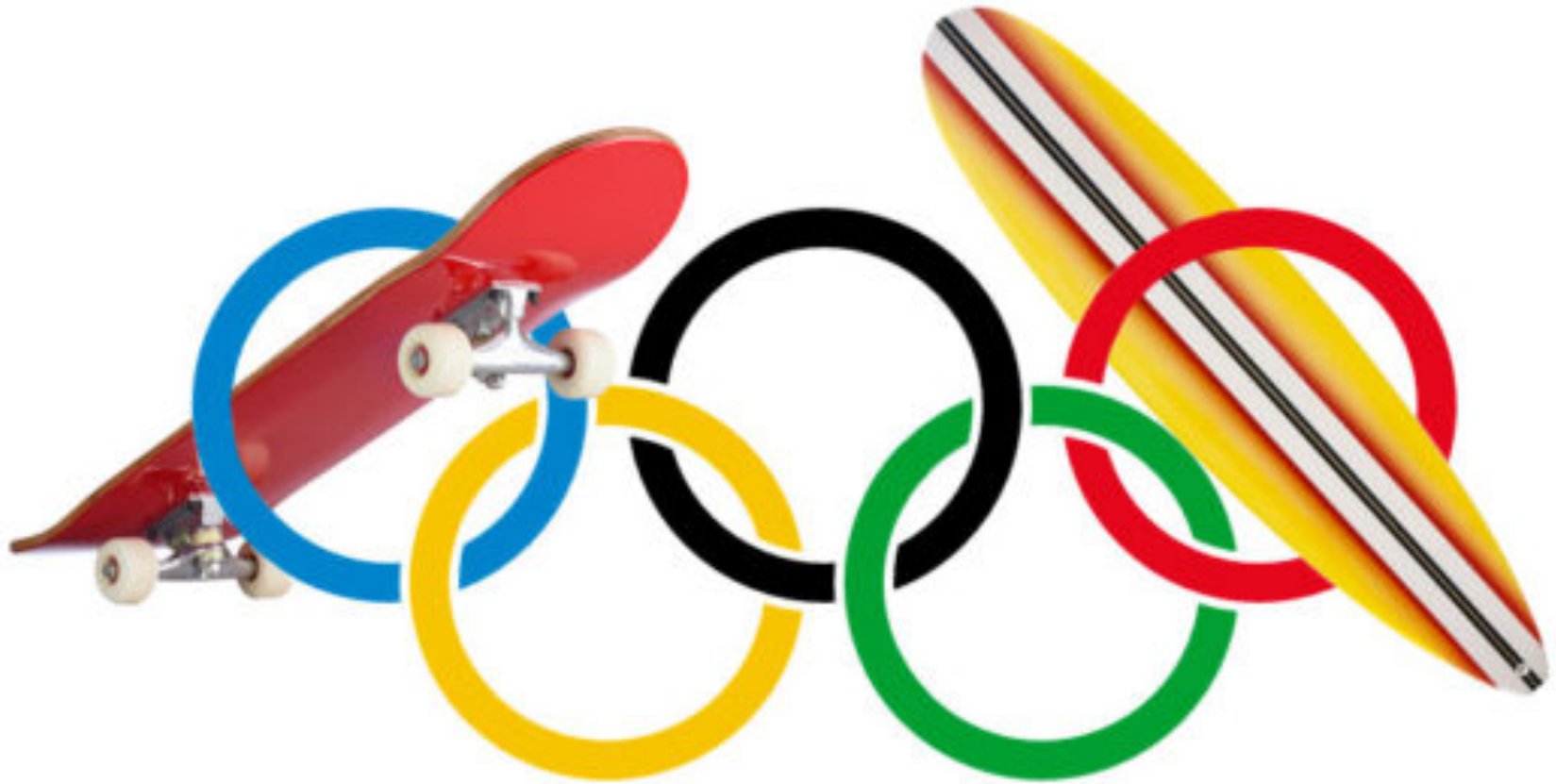




# BELLA KENWORTHY



# TOKYO 2020: SKATEBOARDING AND SURFING ADDED





# US OLYMPIC SURF TEAM



## SHAUN WHITE: Professional Skateboarder



3 Time Olympic Gold Medalist

# TONY HAWK: Professional Skateboarder



RESTRICTED USE

SKATERS ONLY!!









Let the Bikes IN



# SPORT PARTICIPATION DATA

## ROLLER SPORTS

- Skateboarders
  - 6.4 million
- BMX/Mountain Bike
  - 8.3 million
- Inline/Roller Skaters
  - 1.5 million
- Scooters
  - 4.8 million
- Accessibility Plus
  - ??
- **Total 21 Million**

## FIELD SPORTS

- Soccer
  - 13.2 million (outdoor)
- Baseball
  - 12.5 million
- Football
  - 5.8 million (flag)
- Lacrosse
  - 1.3 million
- Field Hockey
  - .9 million
- **Total 33.7 Million**

# BMX FREESTYLE – TOKOYO 2020





# CALIFORNIA LAW

Skatepark Liability Law

SB 1003

Amended 2020

# SB 1003 - EXPANDED INCLUSION

- Skateboard parks: other wheeled recreational devices: safety and liability.
- Limited liability for Hazardous Recreational Activity expanded to include:
  - Non-motorized: Skateboards, Bicycles, roller-skates, inline-skates scooters and wheelchairs
- A public agency may satisfy for the above if it complies with certain things
  - Does not supervise on a regular basis
  - Passes a local ordinance requiring the use of safety gear
  - Posting of signs at the facility affording reasonable notice of rules
  - The appropriate local public agency shall maintain a record of all known or reported injuries



# ACCESSIBILITY

INCLUSIVENESS  
AND MIXED USE

DIFFERENT SPORTS AND SKILL LEVELS USE PARKS DIFFERENTLY









AARON FORTHERINGHAM INVERT





PRETTY RADICAL





# ADA CONSULTANT – AARON FOTHERINGHAM







- Breaking the rules?
- A scooter rider?
- Adaptive skater?
- Does it even matter?

# PARK MANAGEMENT AND EVENT ORGANIZING



SoCal WCMX is going to have crazy week

Volcom WCMX Park in Costa Mesa  
Wednesday 3/29 at 2pm

Fontana WCMX Park  
Thursday 3/30 at Noon

Prince WCMX Park in Oceanside  
Friday 3/31 at 9am

Fontana WCMX Park  
Saturday 4/1 at 10am

# SLO COUNTY ORDINANCE 11.04.130

## Skating and Model Planes

- **11.04.130 - Skating and model planes.**
  - a) Skateboard, Skates, and other Wheel Recreational Devices. No person shall ride, skate or use skateboards, skates or other wheeled recreational devices in any county park or facility where such prohibition has been posted giving notice thereof.
    1. For purposes of this section, "skateboard" means a mechanism with wheels that are fastened to a platform commonly constructed to accommodate a standing person. Skateboards are normally propelled by the operator pushing off the ground with one foot, or by the force of gravity.
    2. For purposes of this section, "skates" means any footwear device which may be attached to the foot or footwear, to be used to aid the wearer in moving or propulsion, including in-line skates, roller blades, roller skates, roller skate shoes, and roller shoes.
    3. For purposes of this section, "other wheeled recreational devices" means nonmotorized bicycles, scooters, in-line skates, roller skates or wheelchairs.
  - b) Helmet, Elbows Pads and Knee Pads Required. It is prohibited for any person to ride a skateboard, skates or other wheeled recreational device in a county skate park unless that person is wearing a helmet, elbow pads and knee pads.
  - c) Posting of Signs at Skate Park. Signs shall be posted at all county skate parks giving notice that any person riding a skateboard, skates, or other wheeled recreational device must wear a helmet, elbow pads, and knee pads, and that any person failing to do so will be subject to citation.

# INTERPRETATION OF RISK



- Skate Park Rules / Required Safety Equipment
- California State Law , Health and Safety Code, Section 115775 – 115800 requires us to enforce the use of helmets, elbow and knee pads. This law is strictly enforced.
- - Helmets required: must be tightly fastened and secured.
  - Elbow pads and knee pads required. (CHSC 115800a)
  - Wrist guards highly recommended.
  - Skateboards, roller blades, roller skates, and small-wheeled scooters only.
  - No smoking or tobacco products. (CHSC 104495)
  - No food or drink in the skate park.
  - Spectators must use viewing area outside the skate park.
  - No pets allowed in the skate park or unattended outside.
  - Littering is prohibited. (SLO Co. Ord. 11.16)
  - Additional obstacles or other materials may not be used.
  - Be courteous and respectful of our neighbors.
  - Violation of the rules could result in eviction. (SLO Co. Ord. 11.20.060)

# DESIGN EXAMPLES

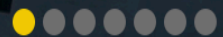
Design examples of similar sized projects overlaid on the site

SKATEPARK LOCATION  
LOS ANGELES, CA

SKATEPARK NAME  
LAKE STREET SKATEPARK

SKATEPARK SIZE  
7,000 SQ. FT.

YEAR BUILT  
2019



Los Angeles, CA – Street plaza with mini section and bowled end – 80/20 Ratio



# Street Plaza w/Bowl

7000 sf - 55' at widest x 132' long



Los Angeles, CA – Street plaza with mini section and bowled end – 80/20 Ratio

# Street Plaza w/Bowl

7000 sf - 55' at widest x 132' long



Los Angeles, CA – Street plaza with mini section and bowled end – 80/20 Ratio

# Street Plaza w/Bowl

7000 sf - 55' at widest x 132' long



Los Angeles, CA – Street plaza with mini section and bowled end – 80/20 Ratio



PROJECT TITLE  
**CAMBRIA, CA**

SHEET TITLE  
**BASE MAP**

SHEET  
**1**

THESE PLANS ARE PREPARED BY THE ARCHITECT FOR THE CLIENT'S USE ONLY. THEY ARE NOT TO BE USED FOR ANY OTHER PROJECT OR IN ANY MANNER THAT MAY BE CONSIDERED AS A REPRESENTATION OF THE ARCHITECT'S SERVICES. THE ARCHITECT ASSUMES NO LIABILITY FOR ANY DAMAGE OR INJURY TO PERSONS OR PROPERTY ARISING FROM THE USE OF THESE PLANS. THE ARCHITECT'S LIABILITY IS LIMITED TO THE PROFESSIONAL SERVICES PROVIDED BY THE ARCHITECT. THE ARCHITECT DOES NOT WARRANT THE ACCURACY OF ANY INFORMATION PROVIDED BY THE CLIENT. THE ARCHITECT'S LIABILITY IS LIMITED TO THE PROFESSIONAL SERVICES PROVIDED BY THE ARCHITECT. THE ARCHITECT DOES NOT WARRANT THE ACCURACY OF ANY INFORMATION PROVIDED BY THE CLIENT.

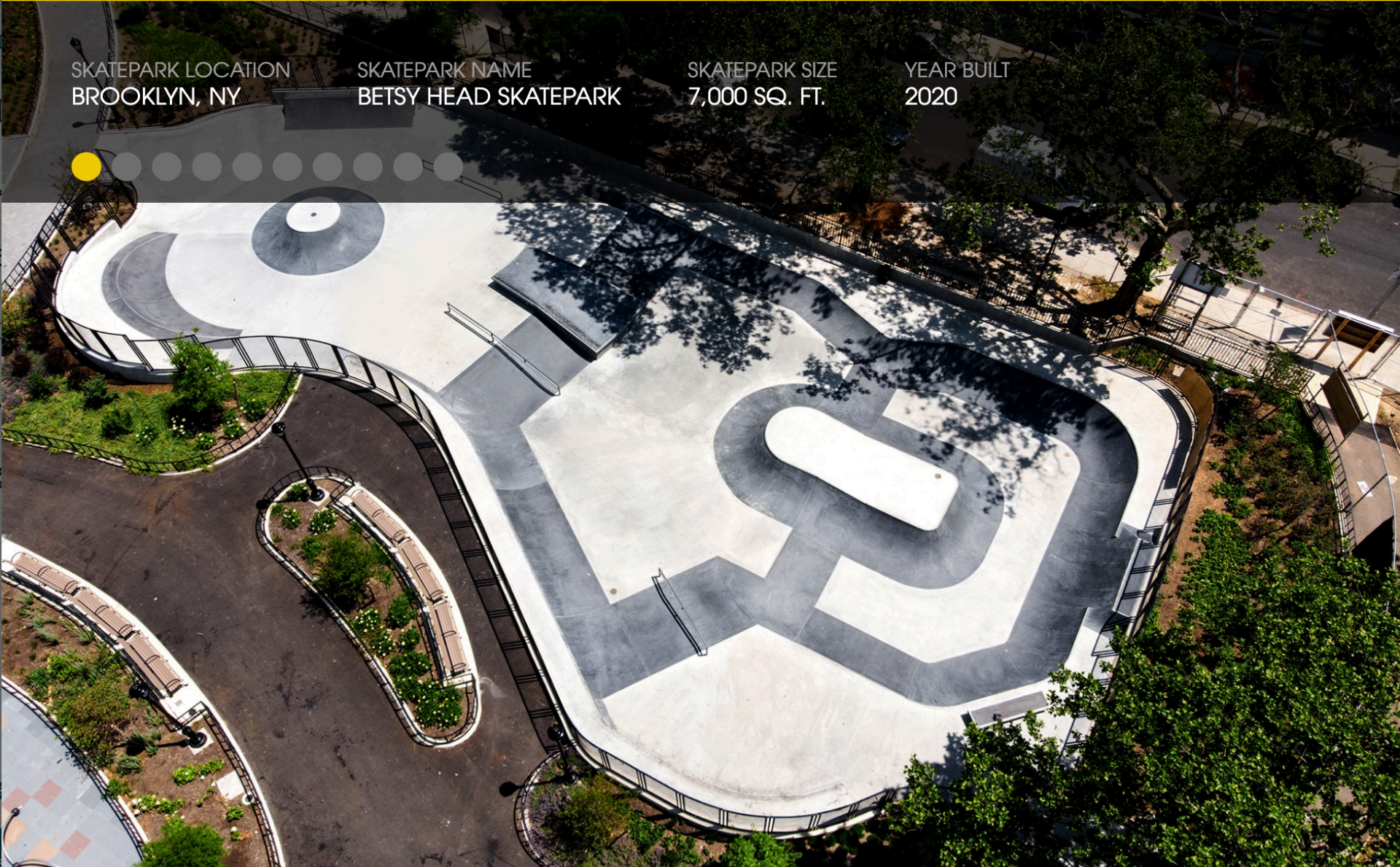
**SR**  
**SPOHN RANCH SKATE PARKS**  
 DESIGN. BUILD. COME TOGETHER.  
 615 S. F STREET, SUITE 300, LOS ANGELES, CA 90058  
 TEL: 213.620.8800 FAX: 213.620.8801

SKATEPARK LOCATION  
BROOKLYN, NY

SKATEPARK NAME  
BETSY HEAD SKATEPARK

SKATEPARK SIZE  
7,000 SQ. FT.

YEAR BUILT  
2020



Brooklyn, NY – Small street plaza and flow section w/island – 45/55 Ratio

# Small Street Plaza w/Flow Section

7000 sf - 74' at widest x 148' long



Brooklyn, NY – Small street plaza and flow section w/island – 45/55 Ratio

# Small Street Plaza w/Flow Section

7000 sf - 74' at widest x 148' long



Brooklyn, NY – Small street plaza and flow section w/island – 45/55 Ratio

# Small Street Plaza w/Flow Section

7000 sf - 74' at widest x 148' long



Brooklyn, NY – Small street plaza and flow section w/island – 45/55 Ratio





PROJECT TITLE  
**CAMBRIA, CA**

SHEET TITLE  
**BASE MAP**

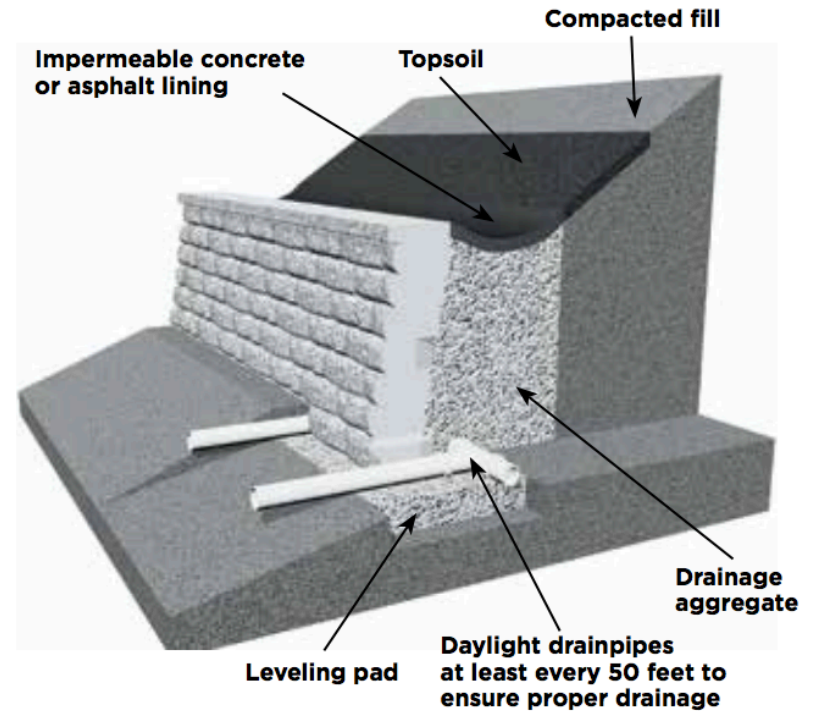
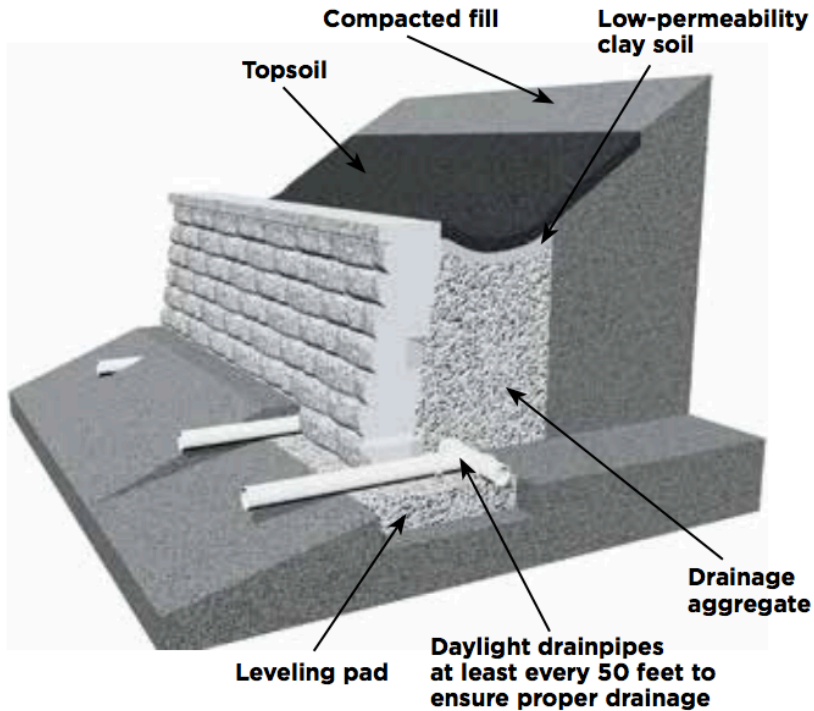
SHEET  
**2**

The user agrees to hold the designer harmless for any and all claims, damages, losses, and expenses, including reasonable attorneys' fees, arising out of or from the use of the information contained in this document, whether or not such claims, damages, losses, or expenses are caused in whole or in part by the negligence of the designer. This release shall be deemed to have been accepted by the user upon the user's use of the information contained in this document. Copyright © 2018 Spohn Ranch, Inc.

**SPOHN RANCH  
 SKATE PARKS**  
 DESIGN. BUILD. COME TOGETHER.  
1115 S. F STREET, SUITE 300, LOS ANGELES, CA 90015  
 TEL: 323.438.3333 FAX: 323.438.3334



# CUT-BACK AT TOE OF SLOPE



Retaining wall system with swale located long base of slope to capture debris and stormwater runoff. This would stabilize the slope and create addition area/width allow for more creative design.



SKATEPARK LOCATION  
IVINS, UT

SKATEPARK NAME  
UNITY PARK SKATEPARK

SKATEPARK SIZE  
8,000 SQ. FT.

YEAR BUILT  
2019



Ivins, UT – Street plaza and bowl, w/colored concrete, rockscape and entry arch – 70/30 Ratio

# Long Street Sect. w/Intermediate Bowl

8000 sf - 76' at widest x 195' long



Ivins, UT – Street plaza and bowl, w/colored concrete, rockscape and entry arch – 70/30 Ratio

# Long Street Sect. w/Intermediate Bowl

8000 sf - 76' at widest x 195' long



Ivins, UT – Street plaza and bowl, w/colored concrete, rockscape and entry arch – 70/30 Ratio

# Long Street Sect. w/Intermediate Bowl

8000 sf - 76' at widest x 195' long



Ivins, UT – Street plaza and bowl, w/colored concrete, rockscape and entry arch – 70/30 Ratio

# Long Street Sect. w/Intermediate Bowl

8000 sf - 76' at widest x 195' long



Ivins, UT – Street plaza and bowl, w/colored concrete, rockscape and entry arch – 70/30 Ratio





PROJECT TITLE  
**CAMBRIA, CA**

SHEET TITLE  
**BASE MAP**

SHEET  
**3**

This plan and these specifications are prepared by the engineer for the project and are not to be used for any other project. The engineer is not responsible for the accuracy of the information submitted to the engineer. The engineer is not responsible for the accuracy of the information submitted to the engineer. The engineer is not responsible for the accuracy of the information submitted to the engineer. The engineer is not responsible for the accuracy of the information submitted to the engineer.



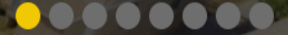
**SPOHN RANCH  
 SKATE PARKS**  
 DESIGN. BUILD. COME TOGETHER.  
 615 S. F STREET, SUITE 300, LOS ANGELES, CA 90058  
 TEL: 310.441.3333 FAX: 310.441.3334

SKATEPARK LOCATION  
BAKERSFIELD, CA

SKATEPARK NAME  
NORTH BEARDSLEY SKATEPARK

SKATEPARK SIZE  
8,000 SQ. FT.

YEAR BUILT  
2018



Oildale, CA – Street, flow & bowl, w/colored concrete, synthetic turf & entry sculpture – 40/60

# Street Sect. w/Flow Sect. & Bowl

8000 sf - 68' at widest x 124' long



Oildale, CA – Street, flow & bowl, w/colored concrete, synthetic turf & entry sculpture – 40/60

# Street Sect. w/Flow Sect. & Bowl

8000 sf - 68' at widest x 124' long



Oildale, CA – Street, flow & bowl, w/colored concrete, synthetic turf & entry sculpture – 40/60

# Street Sect. w/Flow Sect. & Bowl

8000 sf - 68' at widest x 124' long



Oildale, CA – Street, flow & bowl, w/colored concrete, synthetic turf & entry sculpture – 40/60

# Street Sect. w/Flow Sect. & Bowl

8000 sf - 68' at widest x 124' long



Oildale, CA – Street, flow & bowl, w/colored concrete, synthetic turf & entry sculpture – 40/60



PROJECT TITLE  
**CAMBRIA, CA**

SHEET TITLE  
**BASE MAP**

SHEET  
**6**

This plan shall be used only for the project for which it was prepared and shall not be used for any other project. Reproduction, distribution, or use of this plan for any other project without the written consent of Spohn Ranch, Inc. is strictly prohibited. Spohn Ranch, Inc. reserves the right to modify this plan without notice and without liability. Copyright © 2015 Spohn Ranch, Inc.



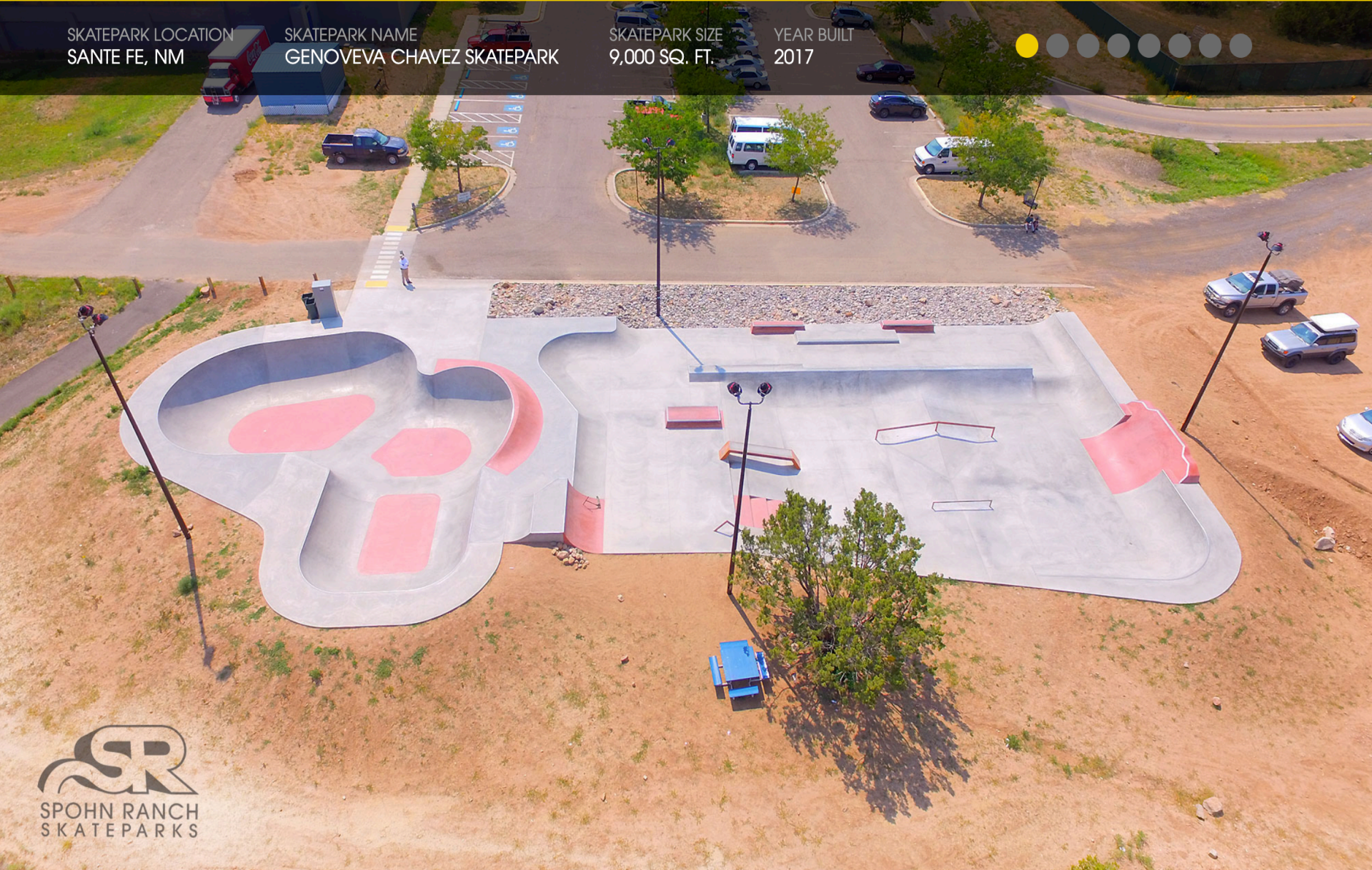
**SPOHN RANCH  
 SKATE PARKS**  
 DESIGN. BUILD. COME TOGETHER.  
1115 S. FINE FINE AVENUE, LOS ANGELES, CA 90007  
 TEL: 323.438.3300 FAX: 323.438.3302

SKATEPARK LOCATION  
SANTE FE, NM

SKATEPARK NAME  
GENOVEVA CHAVEZ SKATEPARK

SKATEPARK SIZE  
9,000 SQ. FT.

YEAR BUILT  
2017





# Street Sect. w/Advanced Bowl

9000 sf - 62' at widest x 162' long



Santa Fe, NM – Street plaza and bowl, w/colored concrete, rockscape and lighting– 60/40 Ratio

# Street Sect. w/Advanced Bowl

9000 sf - 62' at widest x 162' long



Santa Fe, NM – Street plaza and bowl, w/colored concrete, rockscape and lighting– 60/40 Ratio

# Street Sect. w/Advanced Bowl

9000 sf - 62' at widest x 162' long



Santa Fe, NM – Street plaza and bowl, w/colored concrete, rockscape and lighting– 60/40 Ratio



PROJECT TITLE  
**CAMBRIA, CA**

SHEET TITLE  
**BASE MAP**

SHEET  
**4**

THIS PLAN AND ALL INFORMATION CONTAINED HEREIN IS THE PROPERTY OF SPOHN RANCH SKATE PARKS AND IS NOT TO BE REPRODUCED OR TRANSMITTED IN ANY FORM OR BY ANY MEANS, ELECTRONIC OR MECHANICAL, INCLUDING PHOTOCOPYING, RECORDING, OR BY ANY INFORMATION STORAGE AND RETRIEVAL SYSTEM, WITHOUT THE WRITTEN PERMISSION OF SPOHN RANCH SKATE PARKS. ALL RIGHTS RESERVED.

**SPOHN RANCH SKATE PARKS**  
 DESIGN. BUILD. COME TOGETHER.  
 11111 SPOHN RANCH BLVD, SUITE 100  
 CAMBRIA, CA 95923

SKATEPARK LOCATION  
BAKERSFIELD, CA

SKATEPARK NAME  
PLANZ PARK SKATEPARK

SKATEPARK SIZE  
7,000 SQ. FT.

YEAR BUILT  
2014



Bakersfield, CA – Street plaza and beginner bowl, lighting & iconic art bank – 70/30 Ratio

# Street Sect. w/Beginner Bowl

7000 sf - 68' at widest x 121' long



Bakersfield, CA – Street plaza and beginner bowl, lighting & iconic art bank – 70/30 Ratio

# Street Sect. w/Beginner Bowl

7000 sf - 68' at widest x 121' long



Bakersfield, CA – Street plaza and beginner bowl, lighting & iconic art bank – 70/30 Ratio

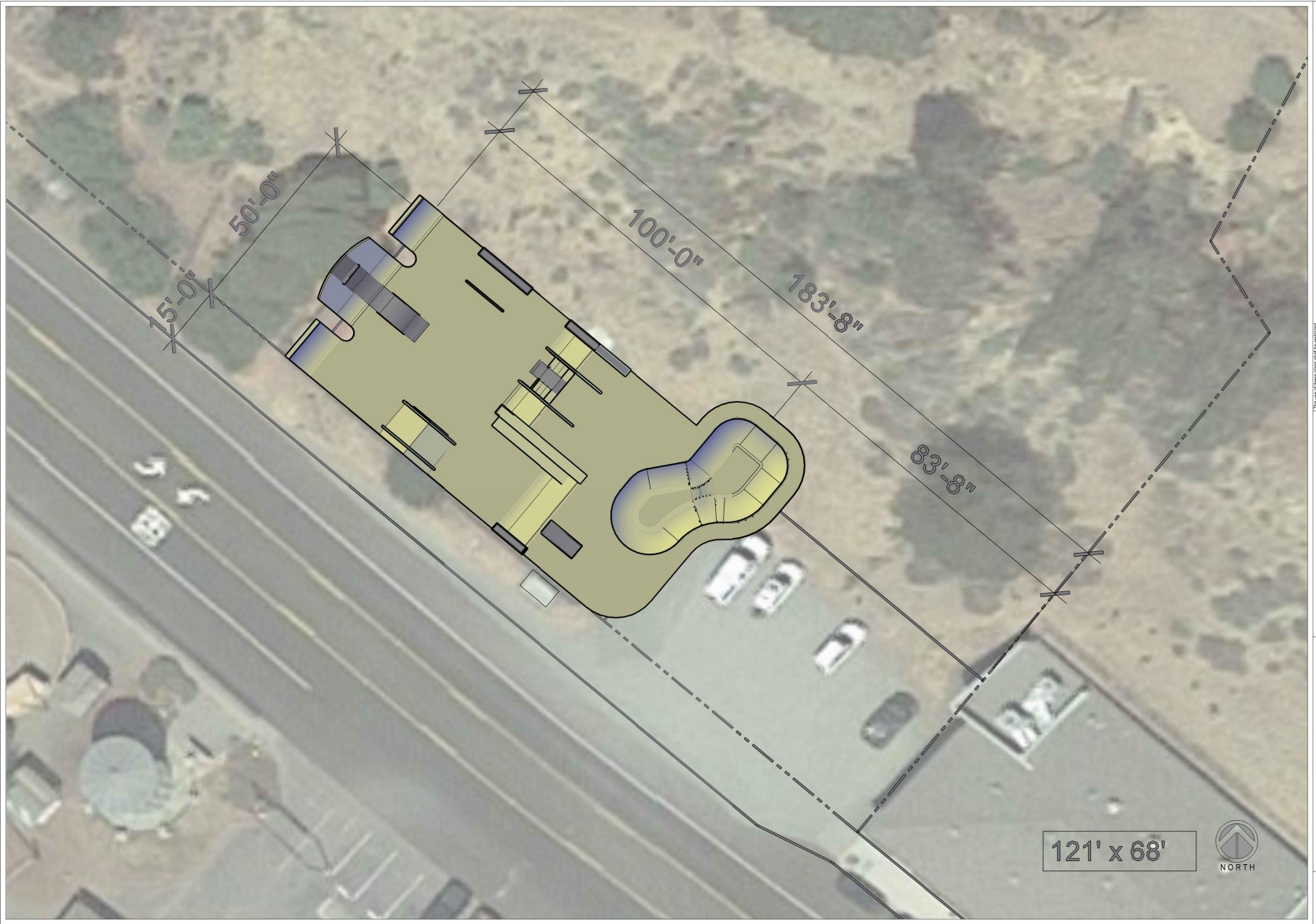
# Street Sect. w/Beginner Bowl

7000 sf - 68' at widest x 121' long



Bakersfield, CA – Street plaza and beginner bowl, lighting & iconic art bank – 70/30 Ratio





PROJECT TITLE  
**CAMBRIA, CA**

SHEET TITLE  
**BASE MAP**

SHEET  
**5**

**SPOHN RANCH SKATE PARKS**  
 DESIGN. BUILD. COME TOGETHER.  

 600 S. GATE AVENUE SUITE 3000 LOS ANGELES, CA 90058  
 TEL: 310.441.3365 FAX: 310.441.3366

THIS PLAN AND ALL INFORMATION CONTAINED HEREIN IS THE PROPERTY OF SPOHN RANCH SKATE PARKS, INC. AND IS TO BE USED ONLY FOR THE PROJECT AND SITE SPECIFICALLY IDENTIFIED HEREIN. ANY REUSE OR MODIFICATION OF THIS PLAN WITHOUT THE WRITTEN CONSENT OF SPOHN RANCH SKATE PARKS, INC. IS STRICTLY PROHIBITED. THE INFORMATION CONTAINED HEREIN IS FOR GENERAL INFORMATION ONLY AND DOES NOT CONSTITUTE A CONTRACT. THE USER SHALL BE RESPONSIBLE FOR OBTAINING ALL NECESSARY PERMITS AND REGULATORY APPROVALS. THE USER SHALL BE RESPONSIBLE FOR OBTAINING ALL NECESSARY PERMITS AND REGULATORY APPROVALS. THE USER SHALL BE RESPONSIBLE FOR OBTAINING ALL NECESSARY PERMITS AND REGULATORY APPROVALS.

SKATEPARK LOCATION  
PERRIS, CA

SKATEPARK NAME  
GOETZ PARK SKATEPARK

SKATEPARK SIZE  
5,000 SQ. FT.

YEAR BUILT  
2020



Perris, CA – Plaza, security lighting, pavilion rock, textured art bank & high-end colored concrete

# Street Plaza w/Small Pocket & Hip

5000 sf



Perris, CA – Plaza, security lighting, pavilion rock, textured art bank & high-end colored concrete

# Street Plaza w/Small Pocket & Hip

5000 sf



Perris, CA – Plaza, security lighting, pavilion rock, textured art bank & high-end colored concrete

# Street Plaza w/Small Pocket & Hip

5000 sf



Perris, CA – Plaza, security lighting, pavilion rock, textured art bank & high-end colored concrete

# Street Plaza w/Small Pocket & Hip

5000 sf



Perris, CA – Plaza, security lighting, pavilion rock, textured art bank & high-end colored concrete

# Street Plaza w/Small Pocket & Hip

5000 sf



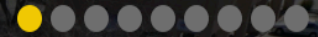
Perris, CA – Plaza, security lighting, pavilion rock, textured art bank & high-end colored concrete

SKATEPARK LOCATION  
LANCASTER, CA

SKATEPARK NAME  
JANE REYNOLDS SKATEPARK

SKATEPARK SIZE  
16,000 SQ. FT.

YEAR BUILT  
2019



Lancaster, CA – Street plaza, Lance Mountain Ghost bowl, lighting synthetic turf – 50/50 Ratio



# Street Plaza w/Advanced Bowl

16,000 sf



Lancaster, CA – Street plaza, Lance Mountain Ghost bowl, lighting synthetic turf – 50/50 Ratio

# Street Plaza w/Advanced Bowl

16,000 sf



Lancaster, CA – Street plaza, Lance Mountain Ghost bowl, lighting synthetic turf – 50/50 Ratio

# Street Plaza w/Advanced Bowl

16,000 sf



Lancaster, CA – Street plaza, Lance Mountain Ghost bowl, lighting synthetic turf – 50/50 Ratio

# Street Plaza w/Advanced Bowl

16,000 sf



Lancaster, CA – Street plaza, Lance Mountain Ghost bowl, lighting synthetic turf – 50/50 Ratio

# Street Plaza w/Advanced Bowl

16,000 sf



Lancaster, CA – Street plaza, Lance Mountain Ghost bowl, lighting synthetic turf – 50/50 Ratio

# Street Plaza w/Advanced Bowl

16,000 sf



Lancaster, CA – Street plaza, Lance Mountain Ghost bowl, lighting synthetic turf – 50/50 Ratio

SKATEPARK LOCATION  
LA PUENTE, CA

SKATEPARK NAME  
IAN CALDERON SKATEPARK

SKATEPARK SIZE  
10000 SQ. FT.

YEAR BUILT  
2020



La Puente, CA – Tech street plaza, lighting, shade structure, iconic over-vert wall

# Tech Street Plaza w/Over-vert Wall

10,000 sf



La Puente, CA – Tech street plaza, lighting, shade structure, iconic over-vert wall



# Tech Street Plaza w/Over-vert Wall

10,000 sf



La Puente, CA – Tech street plaza, lighting, shade structure, iconic over-vert wall

# Tech Street Plaza w/Over-vert Wall

10,000 sf



La Puente, CA – Tech street plaza, lighting, shade structure, iconic over-vert wall

# Tech Street Plaza w/Over-vert Wall

10,000 sf



La Puente, CA – Tech street plaza, lighting, shade structure, iconic over-vert wall

# Tech Street Plaza w/Over-vert Wall

10,000 sf



La Puente, CA – Tech street plaza, lighting, shade structure, iconic over-vert wall

# SLO COUNTY SKATEPARK – LOS OSOS

- Los Osos Skate Park
- Los Osos Skate Park officially opened September 6, 2005 and is a 17,000 square foot concrete park with challenging terrains for all skating levels.
- Street scape terrain provides obstacles and rails that provide hours of skateboard fun.
- There are two bowls that give the experienced skater a thrilling experience as well as entertainment for spectators.



- Skate Park Rules / Required Safety Equipment
- California State Law , Health and Safety Code, Section 115775 – 115800 requires us to enforce the use of helmets, elbow and knee pads. This law is strictly enforced.
- - Helmets required: must be tightly fastened and secured.
  - Elbow pads and knee pads required. (CHSC 115800a)
  - Wrist guards highly recommended.
  - Skateboards, roller blades, roller skates, and small-wheeled scooters only.
  - No smoking or tobacco products. (CHSC 104495)
  - No food or drink in the skate park.
  - Spectators must use viewing area outside the skate park.
  - No pets allowed in the skate park or unattended outside.
  - Littering is prohibited. (SLO Co. Ord. 11.16)
  - Additional obstacles or other materials may not be used.
  - Be courteous and respectful of our neighbors.
  - Violation of the rules could result in eviction. (SLO Co. Ord. 11.20.060)

# SLO COUNTY ORDINANCE 11.04.130

## Skating and Model Planes

- **11.04.130 - Skating and model planes.**
  - a) Skateboard, Skates, and other Wheel Recreational Devices. No person shall ride, skate or use skateboards, skates or other wheeled recreational devices in any county park or facility where such prohibition has been posted giving notice thereof.
    1. For purposes of this section, "skateboard" means a mechanism with wheels that are fastened to a platform commonly constructed to accommodate a standing person. Skateboards are normally propelled by the operator pushing off the ground with one foot, or by the force of gravity.
    2. For purposes of this section, "skates" means any footwear device which may be attached to the foot or footwear, to be used to aid the wearer in moving or propulsion, including in-line skates, roller blades, roller skates, roller skate shoes, and roller shoes.
    3. For purposes of this section, "other wheeled recreational devices" means nonmotorized bicycles, scooters, in-line skates, roller skates or wheelchairs.
  - b) Helmet, Elbows Pads and Knee Pads Required. It is prohibited for any person to ride a skateboard, skates or other wheeled recreational device in a county skate park unless that person is wearing a helmet, elbow pads and knee pads.
  - c) Posting of Signs at Skate Park. Signs shall be posted at all county skate parks giving notice that any person riding a skateboard, skates, or other wheeled recreational device must wear a helmet, elbow pads, and knee pads, and that any person failing to do so will be subject to citation.



DISCUSSION



# DESIGN IDEAS

# CARVER/SURF TRAINING



# CARVER/SURF TRAINING



# CARVER/SURF TRAINING

