



CAMBRIA COMMUNITY SERVICES DISTRICT

REGULAR MEETING

Thursday, July 24, 2008– 12:30 PM

VETERANS MEMORIAL BUILDING, 1000 MAIN ST., CAMBRIA, CA

AGENDA

This agenda is prepared and posted pursuant to Government Code Section 54954.2. By listing a topic on this agenda, the District's Board of Directors has expressed its intent to discuss and act on each item. In addition to any action identified in the summary description of each item, the action that may be taken by the Board of Directors shall include: a referral to staff with specific requests for information; continuance; specific direction to staff concerning the policy or mission of the item; discontinuance of consideration; authorization to enter into negotiations and execute agreements pertaining to the item; adoption or approval; and disapproval.

Copies of the staff reports or other documentation relating to each item of business referred to on the agenda are on file in the Office of the District Clerk, available for public inspection during District business hours. If requested, the agenda and supporting documents shall be made available in alternative formats to persons with a disability. The District Clerk will answer any questions regarding the agenda.

I. OPENING

- A. Call to Order
- B. Pledge of Allegiance
- C. Establishment of Quorum
- D. Report from Closed Session

II. AGENDA REVIEW: ADDITIONS/DELETIONS AND PULLED CONSENT ITEMS

(Estimated Time: 5 minutes)

III. ACKNOWLEDGMENTS/PRESENTATIONS

CERT (Community Emergency Response Team) Presentation, Fire Chief Putney
Emergency Preparedness and Evacuation Plan Presentation, Fire Chief Putney

IV. SPECIAL REPORTS

- A. SHERIFF'S DEPARTMENT REPORT
(Estimated Time: 5 minutes)

V. MANAGER'S AND BOARD REPORTS

(Estimated Time: 10 minutes)

A. MEMBER AND COMMITTEE REPORTS

(Estimated Time: 10 minutes)

VI. CONSENT AGENDA

All matters on the consent calendar are to be approved by one motion. If Directors wish to discuss a consent item other than simple clarifying questions, a request for removal may be made. Such items are pulled for separate discussion and action after the consent calendar as a whole is acted upon.

- A. Approve Expenditures for Month of June 2008
- B. Approve Minutes of Board of Directors Meeting, June 26, 2008
- C. Adopt Resolution 23-2008 Rejecting Claim per SDRMA (Special District Risk Management Authority) Recommendation - Fernandez
- D. Adopt Resolution 24-2008 Rejecting Claim per SDRMA (Special District Risk Management Authority) Recommendation - Coluzzi
- E. Adopt Resolution 25-2008 Rejecting Claim per SDRMA (Special Risk Management Authority) Recommendation - Andriola
- F. Set Public Hearing for August 21, 2008 to Approve the Appropriation Limit for Fiscal Year 2008/2009.

(Estimated Time: 15 minutes)

VII. REGULAR BUSINESS

- A. Status Report on Geotechnical Investigation/Desalination

(Estimated Time: 30 minutes)

VIII. HEARINGS AND APPEALS

- A. Continued Public Hearing to Consider Adoption of Resolution 21-2008 Authorizing a Fire Suppression Benefit Assessment Consumer Price Index (CPI) Adjustment in the Amount of 2.9% for FY 2008/2009

(Estimated Time: 60 minutes)

IX. PUBLIC COMMENT

Members of the public wishing to address the Board on any item not listed on the agenda and within the jurisdiction of the Cambria CSD may do so when

recognized by the President. Public comments during this and other portions of the agenda will be limited to 3 minutes per person.

X. ADJOURN TO CLOSED SESSION, 1316 Tamson Drive, Suite 204, Cambria

CAMBRIA COMMUNITY SERVICES DISTRICT EXPENDITURE REPORT
 Month Ending June 30, 2008

Vendor Name	Check #	Check Date	Line #	Line Amt	Line Description
ACCURATE MAILING SERVICE	47779	6/9/2008	1	\$ 40.63	WD/POSTAGE BAL DUE - MAILING UTIL BILLS 5/10/08
ACCURATE MAILING SERVICE	47779	6/9/2008	2	\$ 40.63	WWW/POSTAGE BAL DUE - MAILING UTIL BILLS 5/10/08
ACCURATE MAILING SERVICE	47779	6/9/2008	3	\$ 245.19	WD/PROF MAILING SERVICES - UTILITY BILLS 5/10/08
ACCURATE MAILING SERVICE	47779	6/9/2008	4	\$ 245.18	WWW/PROF MAILING SERVICES - UTILITY BILLS 5/10/08
ACCURATE MAILING SERVICE	47779	6/9/2008	1	\$ (120.70)	FD/CREDIT REFUND ON PREPAID POSTG-WEED ABTMT 5/22
ACCURATE MAILING SERVICE	47779	6/9/2008	2	\$ 74.68	FD/PROF MAIL SVC-WEED ABATMENT POOSTCARDS 5/22/08
ACCURATE MAILING SERVICE	47779	6/9/2008	1	\$ 40.00	WD/POSTAGE DEPOSIT FOR REMINDER BILLS 6/10/08
ACCURATE MAILING SERVICE	47779	6/9/2008	2	\$ 40.00	WWW/POSTAGE DEPOSIT FOR REMINDER BILLS 6/10/08
ACCURATE MAILING SERVICE	47848	6/17/2008	1	\$ 8.72	WD/POSTAGE BAL. DUE-REMINDER NOTICES 6/11
ACCURATE MAILING SERVICE	47848	6/17/2008	2	\$ 8.72	WWW/POSTAGE BAL. DUE-REMINDER NOTICES 6/11
ACCURATE MAILING SERVICE	47848	6/17/2008	3	\$ 14.21	WD/PROF. MAILING SERVICE
ACCURATE MAILING SERVICE	47848	6/17/2008	4	\$ 14.21	WWW/PROF. MAILING SERVICE
				\$ 651.47	
ADAMS, JAMES R.	47791	6/10/2008	1	\$ 45.00	WD/MONTHLY CELLULAR PHONE SERVICE REIMB JUNE '08
ADVANCED GEOSCIENCE, INC.	47835	6/16/2008	1	\$ 3,300.00	WD/ENVNMTL SURVEYS FOR SHAMEL PARK BEACH 04/09/08
ADVANCED GEOSCIENCE, INC.	47835	6/16/2008	1	\$ 5,800.00	WD/ENVNMTL SURVEYS AT SANTA ROSA BEACH 6/11/08
				\$ 9,100.00	
AERIS, INC	47887	6/25/2008	1	\$ 42.50	WWW/ACETYLENE CYL. RENTAL MAY 2008
AGP VIDEO	47811	6/12/2008	1	\$ 1,400.00	ADM/VIDEO PROD/DIST. BOARD MTG 3/6/08 & 3/27/08
AGP VIDEO	47811	6/12/2008	1	\$ 30.00	ADM/EDITING OF 5/22/08 CCSD DVD
AGP VIDEO	47878	6/25/2008	1	\$ 816.25	ADM/VIDEO PROD. & DIST. BRD MTG. 5/22/08
				\$ 2,246.25	
AIRGAS WEST	47879	6/25/2008	1	\$ 234.21	FD/10 OXYGEN CYLINDERS 06/12/08
AL'S SEPTIC PUMPING, INC	47861	6/19/2008	1	\$ 590.00	WD/MAINTENANCE ON BACKWASH TANK 04/30/08
ALLTHINGSPOS	47803	6/12/2008	1	\$ 113.93	ADM/CASH REGISTER PAPER 6/2/08
AMI PIPE & SUPPLY	47804	6/12/2008	1	\$ 137.63	WWW/4X3 E-CENTRIC REDUCING FLANGE 5/28/08
ARROWHEAD MOUNTAIN SPRING	47805	6/12/2008	1	\$ 61.89	WWW/DRINKING WATER & RENTAL MAY 2008
AT&T PAYMENT CENTER	47836	6/17/2008	1	\$ 358.85	PM/T1 LINES TO CNCT
AT&T PAYMENT CENTER	47836	6/17/2008	2	\$ 358.85	FD/T1 LINES TO CNCT
AT&T PAYMENT CENTER	47836	6/17/2008	3	\$ 358.85	WWW/T1 LINES TO CNCT
AT&T PAYMENT CENTER	47836	6/17/2008	4	\$ 358.84	WD/T1 LINES TO CNCT
AT&T PAYMENT CENTER	47836	6/17/2008	1	\$ 358.84	WD/SCADA SYS-WD CNXN/VG CREEK 5/26-6/25/08
AT&T PAYMENT CENTER	47880	6/25/2008	1	\$ 137.44	ADM/T1 LINE INT. CNXN 4/26-5/25/08
AT&T PAYMENT CENTER	47880	6/25/2008	2	\$ 137.44	FD/T1 LINE INT. CNXN 4/26-5/25/08
AT&T PAYMENT CENTER	47880	6/25/2008	3	\$ 137.44	PM/T1 LINE INT. CNXN 4/26-5/25/08
AT&T PAYMENT CENTER	47880	6/25/2008	4	\$ 137.44	WD/T1 LINE INT. CNXN 4/26-5/25/08
AT&T PAYMENT CENTER	47880	6/25/2008	5	\$ 137.44	WWW/T1 LINE INT. CNXN 4/26-5/25/08
AT&T PAYMENT CENTER	47888	6/25/2008	1	\$ 293.92	WD/ALARM VAN GORDON RD-WELLFIELD JUNE 2008
				\$ 2,775.35	
AT&T/MCI	47862	6/19/2008	1	\$ 36.27	ADM/TRANS. TROLLEY PM. FWRD TO SLO 04/01-05/24/08
AT&T/MCI	47862	6/19/2008	1	\$ 15.95	ADM/RADIO VAULT 5/01/08 TO 06/24/08
AT&T/MCI	47862	6/19/2008	1	\$ 16.71	ADM/FAX MONTHLY CHARGES 04/01/08 TO 05/24/08
AT&T/MCI	47881	6/25/2008	1	\$ 327.41	ADM/MAIN OFFICE MONTHLY CHARGES 4/1-5/24/08
AT&T/MCI	47881	6/25/2008	1	\$ 160.67	FD/MAIN OFFICE MONTHLY CHARGES 04/01-05/24/08
AT&T/MCI	47881	6/25/2008	1	\$ 179.87	FD/T1 SCADA LINES CNCTG FD/WD/WWW MAY 2008
AT&T/MCI	47881	6/25/2008	2	\$ 179.87	WD/T1 SCADA LINES CNCTG FD/WD/WWW MAY 2008
AT&T/MCI	47881	6/25/2008	3	\$ 179.88	WWW/T1 SCADA LINES CNCTG FD/WD/WWW MAY 2008
AT&T/MCI	47889	6/25/2008	1	\$ 16.18	WWW/MONTHLY FAX CHARGES 04/01/08-05/24/08
AT&T/MCI	47889	6/25/2008	1	\$ 15.95	WD/TELEMETRY SYS. MONTHLY CHARGES 04/01-05/24/08
AT&T/MCI	47889	6/25/2008	1	\$ 30.57	PM/VETS HALL ALARM 04/01/08-05/24/08
AT&T/MCI	47889	6/25/2008	1	\$ 16.23	WD/BLDG PUMP LMRT. TANK 04/01/08-05/24/08
AT&T/MCI	47889	6/25/2008	1	\$ 71.49	WD/FAX & USA MONTHLY CHARGES 04/01/08-05/24/08
AT&T/MCI	47889	6/25/2008	1	\$ 119.40	WWW/MAIN OFFICE MONTHLY CHARGES 04/01/08-05/24/08
				\$ 1,366.45	
AVAYA	47863	6/19/2008	1	\$ 101.67	ADM/PHONE & VOICEMAIL MAINT. 06/04/08-09/03/08
AVAYA	47890	6/25/2008	1	\$ 191.28	WWW/PHONE & VOICEMAIL MAINT. 06/18-09/17/08
				\$ 292.95	
BAUER COMPRESSORS	47882	6/25/2008	1	\$ 822.40	FD/REPAIR & SVC OF BREATHING AIR CMPSR 6/9/08
BECERRA, SAUL	47813	6/12/2008	1	\$ 150.00	RC/CLOTHES WASHER REBATE 6/2/08
BJ&J CONSTRUCTION COMPANY	47891	6/25/2008	1	\$ 5,505.00	WD/PAVING ROAD TO REPAIR WATER PATCHES 06/20/08

BODE, BRYAN	47792	6/10/2008	1 \$	45.00	WW/MONTHLY CELLULAR PHONE SERVICE REIMB JUNE '08
BOER, BEN	47814	6/12/2008	1 \$	70.00	PM/MEALS SAN DIEGO TRAILS CONF. 04/28-5/1/08
BOER, BEN	47814	6/12/2008	2 \$	452.25	PM/LODGING SAN DIEGO TRAILS CONF. 04/28-5/1/08
BOER, BEN	47814	6/12/2008	3 \$	375.72	PM/MILEAGE SAN DIEGO TRAILS CONF. 04/28-5/1/08
BOER, BEN	47814	6/12/2008	4 \$	275.00	PM/REG. TRAILS CONF. SAN DIEGO 04/28-5/1/08
				\$ 1,172.97	
BRENNTAG PACIFIC, INC.	47807	6/12/2008	1 \$	582.20	WW/300 GALLONS SODIUM HYPOCHLORITE 6/3/08
BRENNTAG PACIFIC, INC.	47838	6/17/2008	1 \$	272.71	WD/100 GALLONS SODIUM HYPOCHLORITE 06/03/08
				\$ 854.91	
BRUMIT DIESEL INC	47815	6/12/2008	1 \$	18.36	FD/TEMP. SENDER REPAIR #5597 5/16/08
BRUMIT DIESEL INC	47815	6/12/2008	1 \$	79.90	FD/EL. TEMP GAUGE #5597 5/16/08
BRUMIT DIESEL INC	47839	6/17/2008	1 \$	79.90	FD/ENGINE 5787 MISC. PARTS 05/23/08
BRUMIT DIESEL INC	47849	6/17/2008	1 \$	81.37	FD/ENGINE 5791 WHEEL SEAL 05/30/08
				\$ 259.53	
CAL. PARK & REC SOCIETY	47883	6/25/2008	1 \$	450.00	PM/ANNUAL MEMBERSHIP DUES 9/1/08-8/31/09
CAMBRIA AUTO PARTS	47806	6/12/2008	1 \$	49.32	WW/DIESEL ADDITIVE,BUNGY CORDS & GREASE 5/7/08
CAMBRIA AUTO PARTS	47812	6/12/2008	1 \$	19.52	PM/WIPER ASSEMBLY 5/7/08
CAMBRIA AUTO PARTS	47812	6/12/2008	2 \$	9.11	PM/DIESEL ADDITIVE 5/7/08
CAMBRIA AUTO PARTS	47837	6/17/2008	1 \$	62.23	WD/GEAR OIL, GRAPHITE AND BATTERY BRUSH
CAMBRIA AUTO PARTS	47837	6/17/2008	2 \$	2.59	WD/WASHER FLUID
				\$ 142.77	
CAMBRIA ROCK	47844	6/17/2008	1 \$	424.71	WD/12 YDS FILL SAND 06/11/08
CAMBRIA TIRE & AUTO	47904	6/25/2008	1 \$	737.57	WD/FRONT BRAKE REPAIR ON 2005 FORD 06/18/08
CAMBRIA VILLAGE PHARMACY	47818	6/12/2008	1 \$	27.00	ADM/UTILITY BILL COLLECTION MAY 2008
CAMBRIA VILLAGE SQUARE	47783	6/9/2008	1 \$	4,242.84	ADM/MONTHLY OFFICE LEASE PYMT 1316 TAMSON JUNE '08
CAROL FRANE	47822	6/13/2008	1 \$	150.00	RC/FIXTURE REBATE PROGRAM-CLOTHES WASHER
CENTRAL COAST BEARINGS	47840	6/17/2008	1 \$	233.93	WD/BALDOR 1PH, 25HP 1725RPM 56C 05/28/08
CENTRAL COAST BEARINGS	47892	6/25/2008	1 \$	64.76	WD/MOTOR BEARINGS INSTALLED 06/18/08
				\$ 298.69	
CHAPARRAL BUSINESS MACHIN	47864	6/19/2008	1 \$	47.76	ADM/STAPLE CARTRIDGE FOR RICH0 05/20/08
CHEMDRY	47893	6/25/2008	1 \$	565.00	ADM/CARPET CLEANING FOR ADMIN OFFICE 06/14/08
CHEMDRY	47893	6/25/2008	1 \$	51.00	PM/CARPET CLEANING FOR 8 MATS 06/14/08
				\$ 616.00	
CITY OF MORRO BAY	47865	6/19/2008	1 \$	1,000.00	FD/YRLY SVC/MAINT. FEE FOR AIR FILL STATION 07/08
COASTAL REPROGRAPHIC SVCS	47809	6/12/2008	1 \$	404.08	WD/2-SIDE COPIES OF PROP. 218 NOTICE 5/22/08
COASTAL REPROGRAPHIC SVCS	47809	6/12/2008	2 \$	404.07	WW/2-SIDE COPIES OF PROP. 218 NOTICE 5/22/08
				\$ 808.13	
COASTAL ROLLOFF	47808	6/12/2008	1 \$	60.18	WD/DELIVERY TO MANOR WAY 4/25/08
CORBIN WILLITS SYSTEMS	47780	6/9/2008	1 \$	1,140.15	ADM/MONTHLY SUPPORT AGREEMT-MOM SOFTWARE JUNE '08
CREEK ENVIRONMENTAL LAB.	47894	6/25/2008	1 \$	42.00	WD/COLIFORM LAB TEST 06/11/08
CULLIGAN-KITZMAN WATER	47841	6/17/2008	1 \$	37.00	FD/28 DAY WATER SOFTENER CHARGE MAY 2008
DAVIDSON ASSOCIATES	47781	6/9/2008	1 \$	4,620.00	ALL/MONTHLY RETAINER/DEPOSIT JUNE '08 SERVICES
DAVIS PIPE COMPANY	47816	6/12/2008	1 \$	16,672.66	PM/140' 60" HDPE & 1 60" 22.5 ELBOW 5/27/08
DELL BUSINESS CREDIT	47842	6/17/2008	1 \$	112.08	FD/BLACK TONER CARTRIDGE DELL 964 04/28/08
EFLEXGROUP.COM, INC.	47770	6/6/2008	1 \$	210.00	ADM/HRA MONTHLY & EFLEX DEBIT CARD JUNE 2008
EFLEXGROUP.COM, INC.	47866	6/19/2008	1 \$	50.00	ADM/COBRA MONTHLY ADMIN FEE MAY 2008
				\$ 260.00	
ENNIX INCORPORATED	47784	6/10/2008	1 \$	2,975.00	WW/ENNIX DIGESTER OPTIMIZATION 5/8-6/7/08
ENNIX INCORPORATED	47895	6/25/2008	1 \$	2,975.00	WW/ENNIX DIGESTER OPTIMIXATION 6/8-7/7/08
				\$ 5,950.00	
FARM PLAN	47819	6/13/2008	1 \$	203.78	PM/PARTS FOR JOHN DEERE TRACTOR 05/07/08
FERGUSON ENT., INC #632	47820	6/13/2008	1 \$	73.22	WW/4&6 PVC VAN STONE SOC FLG 05/06/08
FERGUSON ENT., INC #632	47820	6/13/2008	1 \$	13.12	WW/PVC VAN STONE SOC FLG 05/06/08
FERGUSON ENT., INC #632	47820	6/13/2008	1 \$	32.92	WD/ MISC. PARTS
FERGUSON ENT., INC #632	47820	6/13/2008	1 \$	261.42	WD/3/4 MIPxMTR INSTATITE COUP 05/27/08

CONSENT AGENDA ITEM VI.A

FERGUSON ENT., INC #632	47820	6/13/2008	1	\$	1,562.63	WD/FIPxFIP BALL CURB ST LW,3/4 MIPxCTS INSTATITE
FERGUSON ENT., INC #632	47843	6/17/2008	1	\$	482.83	WD/FIPxMTR ANG MTR ST 06/04/08
FERGUSON ENT., INC #632	47843	6/17/2008	1	\$	1,504.18	WD/6x1 IP DBL SDL, 4x3 FC REDI CLMP, MISC. PARTS
FERGUSON ENT., INC #632	47896	6/25/2008	1	\$	161.41	WD/14- 3/4 FIPxCTS INSTATITE COUP 06/09/08
				\$	4,091.53	
FGL ENVIRONMENTAL	47785	6/10/2008	1	\$	771.00	WW/INORGANIC AND ORGANIC LAB ANALYSIS 5/30/08
FIRST AMERICAN TITLE CO	47821	6/13/2008	1	\$	176.00	RC/MERGER FEES 1750 NORWICH AVE/SCHUMAKER 5/28/08
FIRST AMERICAN TITLE CO	47821	6/13/2008	1	\$	163.00	RC/MERGER FEES 2110 TRENTON/GAINER 05/28/2008
FIRST AMERICAN TITLE CO	47821	6/13/2008	1	\$	173.00	RC/MERGER FEES 3311 ROGERS DR./RITCHEY 05/28/08
FIRST AMERICAN TITLE CO	47821	6/13/2008	1	\$	163.00	RC/MERGER FEES 1801 BURTON DR./OSTERMANN 5/28/08
FIRST AMERICAN TITLE CO	47821	6/13/2008	1	\$	163.00	RC/MERGER FEES 1022 KENNETH DR./SINGER 05/30/08
				\$	838.00	
FIRST BANKCARD	47810	6/12/2008	1	\$	-	ADM/P.CHALDECOTT VISA CHARGES MAY'08
FIRST BANKCARD	47810	6/12/2008	2	\$	153.13	ADM/DINNER AT ACWA SPRING CONFERENCE
FIRST BANKCARD	47810	6/12/2008	3	\$	213.02	ADM/ROOM CHARGES AT ACWA SPRING CONFERENCE
FIRST BANKCARD	47810	6/12/2008	1	\$	-	FD/R.PUTNEY VISA CHARGES MAY'08
FIRST BANKCARD	47810	6/12/2008	2	\$	26.57	FD/T-CARDS FOR URBAN INTERFACE TRAINING MAY 17TH
FIRST BANKCARD	47810	6/12/2008	1	\$	-	WWW.B.BODE VISA CHARGES MAY'08
FIRST BANKCARD	47810	6/12/2008	2	\$	107.68	WWW/LB1 STARTER HEATER
FIRST BANKCARD	47810	6/12/2008	1	\$	-	ADM/J.COBIN VISA CHARGES FOR MAY'08
FIRST BANKCARD	47810	6/12/2008	2	\$	212.98	ADM/ROOM CHARGES/RESTAURANT ACWA SPRING CONF.
FIRST BANKCARD	47810	6/12/2008	3	\$	44.59	ADM/LUNCH AT ACWA SPRING CONFERENCE
FIRST BANKCARD	47810	6/12/2008	1	\$	-	ADM/B.GRESENS VISA CHARGES MAY'08
FIRST BANKCARD	47810	6/12/2008	2	\$	20.00	ADM/GOOGLE EARTH REGISTRATION FOR MAPPING VIA GPS
FIRST BANKCARD	47810	6/12/2008	3	\$	34.67	ADM/LUNCH MTG-TECH'S COLLECTING DATA AT SHML PRK
FIRST BANKCARD	47810	6/12/2008	1	\$	-	ADM/T.RUDOCK VISA CHARGES MAY'08
FIRST BANKCARD	47810	6/12/2008	2	\$	39.38	ADM/DINNER AT ACWA SPRING CONFERENCE
FIRST BANKCARD	47810	6/12/2008	3	\$	176.02	ADM/ROOM CHARGES AT ACWA SPRING CONFERENCE
				\$	1,028.04	
GREENBERG, GRETCHEN	47786	6/10/2008	1	\$	150.00	RC/FIXTURE REBATE PROGRAM-CLOTHES WASHER
GREENBERG, GRETCHEN	47786	6/10/2008	1	\$	300.00	RC/FIXTURE REBATE PROGRAM-TOILETS
				\$	450.00	
GRESENS, ROBERT C.	47793	6/10/2008	1	\$	45.00	WD/MONTHLY CELLULAR PHONE SERVICE REIMB JUNE '08
HACH COMPANY	47850	6/17/2008	1	\$	187.55	WD/DPD FREE CHLORINE RGT 06/02/08
HINDS, CRAIG	47787	6/10/2008	1	\$	150.00	RC/FIXTURE REBATE PROGRAM-CLOTHES WASHER
HOME DEPOT CREDIT SERVICE	47771	6/6/2008	1	\$	37.15	WWW/ELECTRICAL SUPPLIES SLUDGE PRESS 5/9/08
HOME DEPOT CREDIT SERVICE	47771	6/6/2008	1	\$	387.15	PM/ELECTRIC SUPPLIES FOR SHED AT VETS HALL 5/8/08
HOME DEPOT CREDIT SERVICE	47771	6/6/2008	1	\$	42.84	FD/NOZZLES FOR HOSES 5/15/08
HOME DEPOT CREDIT SERVICE	47771	6/6/2008	1	\$	513.43	WWW/SUPPLIES SLUDGE PRESS BIOSOLIDS PROJECT 5/14/08
				\$	980.57	
INNOVATIVE CONCEPTS	47772	6/6/2008	1	\$	50.00	ADM/1-MONTH SERVICE EXCHANGE 6/1/08
INNOVATIVE CONCEPTS	47772	6/6/2008	1	\$	275.00	ADM/TECH SUPPORT 5/15/08
INNOVATIVE CONCEPTS	47867	6/19/2008	1	\$	762.50	ADM/TECH SUPPORT 06/06/08
				\$	1,087.50	
INT'L CODE COUNCIL (ICC)	47851	6/17/2008	1	\$	100.00	FD/GOVERNMENTAL MEMBER DUES 06/04/08
J B DEWAR	47774	6/6/2008	1	\$	1,751.19	WWW/326 GALLONS DIESEL FUEL 5/28/08
J B DEWAR	47788	6/10/2008	1	\$	885.85	WWW/170 GLAS DIESEL FUEL 6/2/08
J B DEWAR	47788	6/10/2008	1	\$	1,076.04	WD/140 GALS GAS,80 GALS DIESEL FUEL 6/02/08
J B DEWAR	47788	6/10/2008	1	\$	1,887.82	FD/80 GALS GAS,290 GALS DIESEL FUEL 6/02/08
				\$	5,600.90	
JACKSON-HIRSH, INC.	47773	6/6/2008	1	\$	9.24	FD/SHIPPING CHARGES LONG HANDLE SLOT PUNCH 5/22/08
JAMES OTTOSEN	47826	6/13/2008	1	\$	300.00	RC/FIXTURE REBATE PROGRAM-2 1.0 GAL TOILETS
KUYKENDALL, MICHAEL	47794	6/10/2008	1	\$	45.00	WWW/MONTHLY CELLULAR PHONE SERVICE REIMB JUNE '08
LABOSSIERE, J. ALLEYNE	47868	6/19/2008	1	\$	550.00	ADM/TRVL ADV RETIREMENT TRNG SEMINAR 6/24-26/08
LELAND ELECTRONICS	47897	6/25/2008	1	\$	2,009.10	FD/LABOR FOR TECH SERVICES
LELAND ELECTRONICS	47897	6/25/2008	1	\$	1,509.60	ADM/LABOR FOR TECHNICAL SERVICES 06/09/08
LELAND ELECTRONICS	47897	6/25/2008	1	\$	444.00	WWW/LABOR FOR TECH. SERVICES 06/09/08
LELAND ELECTRONICS	47897	6/25/2008	1	\$	266.40	WD/LABOR FOR TECH. SERVICES 06/09/08
LELAND ELECTRONICS	47897	6/25/2008	1	\$	364.60	FD/PARTS INSTALLED ON PIERCE ENGINE 06/09/08
				\$	4,593.70	
LIGHTHOUSE LITHO	47775	6/6/2008	1	\$	185.00	WD/WD & WWW AVAILABILITY PUBLIC HEARING 5/30/08
LIGHTHOUSE LITHO	47775	6/6/2008	2	\$	185.01	WWW/WD & WWW AVAILABILITY PUBLIC HEARING 5/30/08
LIGHTHOUSE LITHO	47852	6/17/2008	1	\$	128.70	FD/FHFR NOTICES 05/19/08
LIGHTHOUSE LITHO	47869	6/19/2008	1	\$	536.25	ADM/#10 REG.#10 WINDOW,#9 RETURN ENVLPS
LIGHTHOUSE LITHO	47869	6/19/2008	2	\$	509.44	WD/#10 REG.#10 WINDOW,#9 RETURN ENVLPS

CONSENT AGENDA ITEM VI.A

LIGHTHOUSE LITHO	47869	6/19/2008	3	\$	509.44	WWW#10 REG.#10 WINDOW.#9 RETURN ENVLPS
LIGHTHOUSE LITHO	47898	6/25/2008	1	\$	667.10	ADM/1000 PURCHASE ORDERS, 500 SVC. REQUEST 6/16
				\$	2,720.94	
MALLORY FIRE CO	47776	6/6/2008	1	\$	175.89	FD/BATTERIES TIC MSA EVOLUTION 5/6/08
MCMMASTER-CARR SUPPLY CO	47777	6/6/2008	1	\$	23.53	WWW6" TEST PLUG 5/21/08
MCMMASTER-CARR SUPPLY CO	47824	6/13/2008	1	\$	(138.78)	WWW/CREDIT PANEL CUTOFF PREM. SWITCH 05/22/08
MCMMASTER-CARR SUPPLY CO	47824	6/13/2008	1	\$	(35.90)	WWW/CREDIT FOR ENCLOSURE SWITCH 05/22/08
MCMMASTER-CARR SUPPLY CO	47824	6/13/2008	1	\$	730.16	WWW/STAINLESS STEEL THREADED ROD & MISC. PARTS
MCMMASTER-CARR SUPPLY CO	47899	6/25/2008	1	\$	580.94	WWW/CONTAINMENT DRUM FOR 55 GALLON DRUM 06/05/08
				\$	1,159.95	
MENDOZA, CARLOS	47795	6/10/2008	1	\$	22.50	PM/MONTHLY CELLULAR PHONE SERVICE REIMB JUNE '08
MENDOZA, CARLOS	47795	6/10/2008	2	\$	22.50	ADM/MONTHLY CELLULAR PHONE SERVICE REIMB JUNE '08
				\$	45.00	
MILLER DRILLING COMPANY	47778	6/6/2008	1	\$	12,000.61	WD/EMERGENCY REPLACEMENT BOOSTER PUMP 5/19/08
MILLER, MARK	47796	6/10/2008	1	\$	45.00	FD/MONTHLY CELLULAR PHONE SERVICE REIMB JUNE '08
MINER'S ACE HARDWARE	47789	6/10/2008	1	\$	48.48	PM/FIRE EXTINGUISHER NEW SHED 5/30/08
MINER'S ACE HARDWARE	47825	6/13/2008	1	\$	58.06	PM/FILTER AIR PLEAT 06/03/08
				\$	106.54	
MISSION LINEN SUPPLY	47790	6/10/2008	1	\$	34.60	PM/LINEN SERVICE & UNIFORM CLEANING MAY 2008
MISSION LINEN SUPPLY	47790	6/10/2008	2	\$	308.04	WD/LINEN SERVICE & UNIFORM CLEANING MAY 2008
MISSION LINEN SUPPLY	47790	6/10/2008	1	\$	309.92	WWW/LINEN SERVICE & UNIFORM CLEANING MAY 2008
				\$	652.56	
MONTANDON, ARTHUR R.	47782	6/9/2008	1	\$	8,250.00	ALL/MONTHLY RETAINER/DEPOSIT LEGAL SVCS JUNE '08
NEW IMAGE TECHNOLOGIES	47828	6/16/2008	1	\$	800.00	ADM/PROGRAM "UTIL BILL CALCULATOR" FOR WEBSITE 5/9
PACIFIC GAS & ELECTRIC	47802	6/11/2008	1	\$	644.03	FD/ELECTRIC SERVICE 3/29-5/6
PACIFIC GAS & ELECTRIC	47802	6/11/2008	2	\$	114.02	PM/ELECTRIC SERVICE 3/29-5/6
PACIFIC GAS & ELECTRIC	47802	6/11/2008	3	\$	42.70	PM/ELECTRIC SERVICE 3/29-5/6
PACIFIC GAS & ELECTRIC	47802	6/11/2008	4	\$	891.10	PM/ELECTRIC SERVICE 3/29-5/6
PACIFIC GAS & ELECTRIC	47802	6/11/2008	5	\$	793.96	ADM/ELECTRIC SERVICE 3/29-5/6
PACIFIC GAS & ELECTRIC	47802	6/11/2008	6	\$	5,562.78	WD/ELECTRIC SERVICE 3/29-5/6
PACIFIC GAS & ELECTRIC	47802	6/11/2008	7	\$	10,275.96	WWW/ELECTRIC SERVICE 3/29-5/6
PACIFIC GAS & ELECTRIC	47827	6/13/2008	1	\$	4.44	PM/ELEC SVC 3195 RODEO GROUNDS RD 4/30-5/29/08
PACIFIC GAS & ELECTRIC	47827	6/13/2008	1	\$	13.30	ADM/ELEC SVC 1316 TAMSEN #203
PACIFIC GAS & ELECTRIC	47829	6/16/2008	1	\$	19.14	WD/ELEC SVC 7806 VAN GORDON CK RD 4/30 - 5/29
PACIFIC GAS & ELECTRIC	47829	6/16/2008	1	\$	11.60	WD/ELEC SVC 988 MANOR WAY-PK TANKS 5/1-5/30
PACIFIC GAS & ELECTRIC	47829	6/16/2008	1	\$	2,527.96	WD/ELEC SVC 2820 SR CRK RD-HS WELL PUMP 5/1-5/30
PACIFIC GAS & ELECTRIC	47834	6/16/2008	1	\$	148.42	WWW/ELEC SVC 990 SAN SIMEON CREEK RD 4/30-05/29/08
				\$	21,049.41	
PASO ROBLES FORD	47870	6/19/2008	1	\$	1,184.01	WWW/TRNSMSN FLUSH SVC, TIRE ROTATION, OIL/FLTR CHG
PROCARE JANITORIAL SUPPLY	47884	6/25/2008	1	\$	114.70	ADM/PAPER PRODUCTS FOR ADMIN OFFICES 05/20/08
PROCARE JANITORIAL SUPPLY	47884	6/25/2008	1	\$	506.46	PM/JANITORIAL AND PUB. RESTROOM SUPPLIES 5/20/08
PROCARE JANITORIAL SUPPLY	47884	6/25/2008	1	\$	2.68	PM/AQUADOZER SQUEEGEE ACME THREADED INSERT 6/4/08
				\$	623.84	
PUBLIC RETIREMENT	47871	6/19/2008	1	\$	190.00	ADM/REGISTRATION FOR RETIREMENT TRNG SEM. 6/4/08
PUBLIC SAFETY CENTER, INC	47885	6/25/2008	1	\$	178.84	FD/C,AAA & 9 VOLT BATTERIES 06/05/08
QUILL CORP	47830	6/16/2008	1	\$	252.06	FD/GREEN CARD STOCK, EXACT INDEX, PAPER 5/8
QUILL CORP	47872	6/19/2008	1	\$	(69.44)	ADM/ASTROBRIGHTS CARD STOCK PAPER 05/16/08
QUILL CORP	47872	6/19/2008	1	\$	(44.60)	ADM/WRITE-ON TAB DIV., AVERY LASER LABELS 6/03/08
QUILL CORP	47872	6/19/2008	1	\$	6.57	ADM/ROLAIDS ANTACID MEDICATION 06/10/08
QUILL CORP	47872	6/19/2008	1	\$	200.06	ADM/LASER PAPER,INK PENS,BINDER CLIPS, INK FLUID
QUILL CORP	47900	6/25/2008	1	\$	69.44	ADM/ASTROBRIGHTS CARD STOCK 05/16/08
QUILL CORP	47900	6/25/2008	1	\$	137.49	ADM/LASER PRINTER PAPER 20 REAMS 05/21/08
QUILL CORP	47900	6/25/2008	1	\$	63.04	ADM/INK REFILL, 1/3 CUT FILE FOLDERS, 1IN BINDERS
QUILL CORP	47900	6/25/2008	1	\$	169.67	ADM/LASER PRINTER PAPER 8 1/2x11 06/03/08
QUILL CORP	47900	6/25/2008	1	\$	6.75	ADM/SEE-THRU PLASTIC FOLDERS 06/04/08
QUILL CORP	47900	6/25/2008	1	\$	44.84	ADM/POST-IT NOTE PADS AND WINDEX WIPES 06/04/08
QUILL CORP	47900	6/25/2008	1	\$	28.70	ADM/WRITE-ON DIV, TAPE FOR BROTHER LABEL MAKER
				\$	864.58	
REGIONAL TRANSIT AUTHOR.	47901	6/25/2008	1	\$	1,647.50	ADM/10% FAREBOX GUARANTEE ON TROLLEY OCT-DEC '07
REGIONAL TRANSIT AUTHOR.	47901	6/25/2008	1	\$	885.83	ADM/10% FAREBOX GUARANTEE ON TROLLEY JAN-MAR '08
				\$	2,533.33	
RICHARD SCHEINBERG MD,INC	47873	6/19/2008	1	\$	500.00	FD/FIT FOR DUTY EXAM D.DECLERCQ 05/15/08
RICHARDS, TRINA	47853	6/17/2008	1	\$	800.00	FD/FHFR REFUND ON 024.311.004 & 024.252.005 6/6/08

CONSENT AGENDA ITEM VI.A

ROYAL CHEMICAL	47845	6/17/2008	1 \$	1,020.44	FD/18 GALLONS CLASS A FOAM 03/13/08
ROYAL CHEMICAL	47845	6/17/2008	1 \$	1,020.48	FD/18 GALLONS CLASS A FIRE FOAM 3/13/08
				<u>\$ 2,040.92</u>	
RUDOCK, TAMMY	47797	6/10/2008	1 \$	45.00	ADM/MONTHLY CELLULAR PHONE SERVICE REIMB JUNE '08
SAN JOAQUIN SUPPLY	47831	6/16/2008	1 \$	464.79	FD/JANITORIAL SUPPLIES & PAPER PRODUCTS 5/6/08
SANTA MARIA MIDDLE SCHOOL	47798	6/10/2008	1 \$	75.95	FD/REIMB FOR SUPP-WILDLAND TRNG FIRE DRILL ON 5/17
SIEMENS WATER TECHNOLOG.	47854	6/17/2008	1 \$	50.64	WD/PARTS FOR CL2 PUMP 02/08/08
SLO COUNTY	47832	6/16/2008	1 \$	532.06	WD/CROSS CONNECTN INSPECTN & ADMIN COST 3/1-4/30
SLO COUNTY CLERK-RECORDER	47800	6/11/2008	1 \$	14.00	ADM/RELEASE OF LIEN 339 BRISTOL/MAGILL 6/11/08
SLO COUNTY NEWSPAPERS	47902	6/25/2008	1 \$	202.50	WD/PUBLIC HEARING '08-'10 BDGT & STANDBY CHRGS
SLO COUNTY NEWSPAPERS	47902	6/25/2008	2 \$	202.50	WW/PUBLIC HEARING '08-'10 BDGT & STANDBY CHRGS
				<u>\$ 405.00</u>	
SMARDAN HATCHER	47874	6/19/2008	1 \$	158.90	WWW/4 INCH EXT BACK WATER VALVE 05/15/08
SMITH, JUSTIN	47855	6/17/2008	1 \$	65.00	WD/REIMBURSEMENT FOR T2 EXAM FEES 05/28/08
SOTO'S MARKET	47856	6/17/2008	1 \$	54.72	FD/SUPPLIES FOR CMB PINES LODGE FIRE/INVESTIGATION
SOUTH KERN MACHINERY	47875	6/19/2008	1 \$	325.22	WWW/HOSE FOR JOHN DEERE LOADER 06/13/08
SUN PACIFIC	47799	6/10/2008	1 \$	1,233.00	WD/INSTALL NEW PUMP-WATER YARD BOOSTER STATION 6/4
SUN PACIFIC	47903	6/25/2008	1 \$	491.45	WD/MOTOR STARTER COIL 06/16/08
				<u>\$ 1,724.45</u>	
SUSAN S. SWADENER, PhD RD	47857	6/17/2008	1 \$	75.00	FD/NUTRITION ASSESSMENT-DEXTER UPTON
SUSAN S. SWADENER, PhD RD	47857	6/17/2008	2 \$	75.00	FD/NUTRITION ASSESSMENT-JOSEPH GIBSON
				<u>\$ 150.00</u>	
TELEMANAGEMENT SERVICES	47886	6/25/2008	1 \$	77.04	FD/LONG DISTANCE PHONE SERVICE 4/16-5/20/08
TELEMANAGEMENT SERVICES	47886	6/25/2008	2 \$	76.31	ADM/LONG DISTANCE PHONE SERVICE 4/16-5/20/08
TELEMANAGEMENT SERVICES	47886	6/25/2008	3 \$	38.73	WD/LONG DISTANCE PHONE SERVICE 4/16-5/20/08
TELEMANAGEMENT SERVICES	47886	6/25/2008	4 \$	39.96	WWW/LONG DISTANCE PHONE SERVICE 4/16-5/20/08
TELEMANAGEMENT SERVICES	47886	6/25/2008	5 \$	4.26	PM/LONG DISTANCE PHONE SERVICE 4/16-5/20/08
				<u>\$ 236.30</u>	
THE DOCUTEAM	47817	6/12/2008	1 \$	227.14	ADM/DOCUMENT STORAGE MAY 2008
THE GAS COMPANY	47823	6/13/2008	1 \$	206.83	PM/GAS SERVICE 1000 MAIN ST. 04/29/08-05/29/08
THE GAS COMPANY	47823	6/13/2008	1 \$	8.07	ADM/GAS SVC 1316 TAMSEN STE. 201 4/29/08-5/29/08
THE GAS COMPANY	47823	6/13/2008	1 \$	293.11	FD/GAS SERVICE 2850 BURTON DR. 04/29-05/29/08
THE GAS COMPANY	47823	6/13/2008	1 \$	16.15	ADM/GAS SERVICE 1316 TAMSEN ST. STE. 204
THE GAS COMPANY	47823	6/13/2008	1 \$	4.84	AMD/GAS SVC 1316 TAMSEN STE. 203 4/29/08-5/29/08
THE GAS COMPANY	47823	6/13/2008	1 \$	8.09	FD/GAS SERVICE 5490 HEATH LN. 4/30-05/30/08
THE GAS COMPANY	47823	6/13/2008	1 \$	48.72	FD/GAS SERVICE 5500 HEATH LN, #B 04/30-05/30/08
THE GAS COMPANY	47823	6/13/2008	1 \$	61.65	WWW/GAS SERVICE 5500 HEATH LN. 04/30-05/30/08
THE GAS COMPANY	47823	6/13/2008	1 \$	37.33	PM/GAS SERVICE 3195 BURTON DR. 04/29/08-05/29/08
				<u>\$ 684.79</u>	
TITAN INDUSTRIAL SUPPLY	47858	6/17/2008	1 \$	28.85	WD/REPLENISH FIRST AID SUPPLIES 06/09/08
USBANK-OFC EQUIP FIN SVCS	47846	6/17/2008	1 \$	166.94	FD/MONTHLY LEASE AGREEMENT SAVIN 4035 COPIER 5/17
VERIZON WIRELESS	47833	6/16/2008	1 \$	21.79	FD/CELL PHONE HARD WIRED TO RESCUE UNIT 4/8 - 5/7
VERIZON WIRELESS	47876	6/19/2008	1 \$	48.72	FD/CELL PHONE HARDWIRED TO RESCUE UNIT 5/08-6/07
				<u>\$ 70.51</u>	
WARD, ROBERT/JO ANN	47801	6/11/2008	1 \$	158.74	MQ REFUND FOR CUSTOMER # WAR0012 CLOSED ACCT
WARD, ROBERT/JO ANN	47801	6/11/2008	2 \$	-	MQ REFUND FOR CUSTOMER # WAR0012 CLOSED ACCT
				<u>\$ 158.74</u>	
WATSON, KENTHA D.	47859	6/17/2008	1 \$	150.00	RC/FIXTURE REBATE PROGRAM-CLOTHES WASHER 5/29/08
WATTS PREMIER	47877	6/19/2008	1 \$	39.06	ADM/DRINKING WATER REPLACEMENT FILTERS 06/03/08
WERLAND, JOE / LANDY	47860	6/17/2008	1 \$	150.00	RC/FIXTURE REBATE PROGRAM-CLOTHES WASHER 05/02/08
WRIGHT CONSTRUCTION	47847	6/17/2008	1 \$	1,850.00	WD/REPAIR BROKEN HYDRANT AT BERWICK & WHALES 6/11
ECS IMAGING	47749	6/5/2008	9000 \$	(7,309.08)	Ck# 047749 Reversed
Accounts Payable Vendor Sub-Total				<u>\$ 141,579.17</u>	
AFLAC (AMER FAM LIFE INS)	8127	6/17/2008	1 \$	458.27	VOLUNTARY INS-PRETAX
AFLAC (AMER FAM LIFE INS)	8127	6/17/2008	1 \$	121.32	VOLUNTARY INS-PRETAX

AFLAC (AMER FAM LIFE INS)	8193	6/27/2008	1	\$ 458.27	VOLUNTARY INS-PRETAX
AFLAC (AMER FAM LIFE INS)	8193	6/27/2008	1	\$ 121.32	VOLUNTARY INS-PRETAX
				\$ 1,159.18	
CAMBRIA FIREFIGHTERS ASSO	8131	6/17/2008	1	\$ 164.90	RESERVE FIREFTR DUES
EFLEXGROUP.COM, INC.	8130	6/17/2008	1	\$ 1,650.00	MEDICAL REIMBURSEMNT
EFLEXGROUP.COM, INC.	8130	6/17/2008	2	\$ 50.00	MEDICAL REIMBURSEMNT
EFLEXGROUP.COM, INC.	8130	6/17/2008	3	\$ 200.00	MEDICAL REIMBURSEMNT
EFLEXGROUP.COM, INC.	8130	6/17/2008	4	\$ 50.00	MEDICAL REIMBURSEMNT
EFLEXGROUP.COM, INC.	8130	6/17/2008	5	\$ 50.00	MEDICAL REIMBURSEMNT
EFLEXGROUP.COM, INC.	8196	6/27/2008	1	\$ 1,650.00	MEDICAL REIMBURSEMNT
EFLEXGROUP.COM, INC.	8196	6/27/2008	2	\$ 50.00	MEDICAL REIMBURSEMNT
EFLEXGROUP.COM, INC.	8196	6/27/2008	3	\$ 200.00	MEDICAL REIMBURSEMNT
EFLEXGROUP.COM, INC.	8196	6/27/2008	4	\$ 50.00	MEDICAL REIMBURSEMNT
EFLEXGROUP.COM, INC.	8196	6/27/2008	5	\$ 50.00	MEDICAL REIMBURSEMNT
				\$ 4,000.00	
EMPLOYMENT DEVELOPMENT DP	8129	6/17/2008	1	\$ 3,652.51	STATE INCOME TAX
EMPLOYMENT DEVELOPMENT DP	8129	6/17/2008	1	\$ 793.66	STATE INCOME TAX
EMPLOYMENT DEVELOPMENT DP	8195	6/27/2008	1	\$ 5,178.62	STATE INCOME TAX
EMPLOYMENT DEVELOPMENT DP	8195	6/27/2008	1	\$ 909.79	STATE INCOME TAX
				\$ 10,534.58	
H.O.B.-DIRECT DEPOSIT	8132	6/17/2008	1	\$ 3,299.00	Direct Deposit Flat
H.O.B.-DIRECT DEPOSIT	8132	6/17/2008	1	\$ 54,148.28	Direct Deposit Flat
H.O.B.-DIRECT DEPOSIT	8197	6/27/2008	1	\$ 3,299.00	Direct Deposit Flat
H.O.B.-DIRECT DEPOSIT	8197	6/27/2008	1	\$ 52,710.59	Direct Deposit Flat
				\$ 113,456.87	
H.O.B./FEDERAL TAXES	8133	6/17/2008	1	\$ 12,370.94	FEDERAL INCOME TAX
H.O.B./FEDERAL TAXES	8133	6/17/2008	1	\$ 12,302.30	FEDERAL INCOME TAX
H.O.B./FEDERAL TAXES	8133	6/17/2008	1	\$ 2,877.10	FEDERAL INCOME TAX
H.O.B./FEDERAL TAXES	8198	6/27/2008	1	\$ 18,328.80	FEDERAL INCOME TAX
H.O.B./FEDERAL TAXES	8198	6/27/2008	1	\$ 14,102.18	FEDERAL INCOME TAX
H.O.B./FEDERAL TAXES	8198	6/27/2008	1	\$ 3,298.04	FEDERAL INCOME TAX
				\$ 63,279.36	
ICMA-VNTGPT TRSFR AGT 401	8135	6/17/2008	1	\$ 100.00	401-INDIV CONTRIB
ICMA-VNTGPT TRSFR AGT 401	8200	6/27/2008	1	\$ 100.00	401-INDIV CONTRIB
ICMA-VNTGPT TRSFR AGT 457	8134	6/17/2008	1	\$ 2,433.46	457 DEF COMP-INDIV
ICMA-VNTGPT TRSFR AGT 457	8134	6/17/2008	1	\$ 950.00	457 DEF COMP-INDIV
ICMA-VNTGPT TRSFR AGT 457	8134	6/17/2008	1	\$ 461.54	457 DEF COMP-INDIV
ICMA-VNTGPT TRSFR AGT 457	8199	6/27/2008	1	\$ 2,433.46	457 DEF COMP-INDIV
ICMA-VNTGPT TRSFR AGT 457	8199	6/27/2008	1	\$ 950.00	457 DEF COMP-INDIV
ICMA-VNTGPT TRSFR AGT 457	8199	6/27/2008	1	\$ 461.54	457 DEF COMP-INDIV
				\$ 7,890.00	
PERS HEALTH BENEFIT SERV	8205	6/30/2008	1	\$ 29,189.19	MEDICAL INSURANC-YER
PERS HEALTH BENEFIT SERV	8205	6/30/2008	2	\$ 0.02	MEDICAL INSURANC-YER
PERS HEALTH BENEFIT SERV	8205	6/30/2008	3	\$ 89.84	MEDICAL INSURANC-YER
PERS HEALTH BENEFIT SERV	8205	6/30/2008	4	\$ 2,301.94	MEDICAL INSURANC-YER
PERS HEALTH BENEFIT SERV	8205	6/30/2008	5	\$ 1,098.97	MEDICAL INSURANC-YER
PERS HEALTH BENEFIT SERV	8205	6/30/2008	6	\$ 6,939.57	MEDICAL INSURANC-YER
PERS HEALTH BENEFIT SERV	8205	6/30/2008	7	\$ 3,054.70	MEDICAL INSURANC-YER
PERS HEALTH BENEFIT SERV	8205	6/30/2008	8	\$ 1,668.59	MEDICAL INSURANC-YER
PERS HEALTH BENEFIT SERV	8205	6/30/2008	9	\$ 50.20	MEDICAL INSURANC-YER
PERS HEALTH BENEFIT SERV	8205	6/30/2008	1	\$ 1,790.38	MEDICAL INSURANC-YER
				\$ 46,183.40	
PERS RETIREMENT SYSTEM	8136	6/17/2008	1	\$ 0.02	PERS PAYROLL REMITTANCE
PERS RETIREMENT SYSTEM	8136	6/17/2008	2	\$ 28,226.95	PERS PAYROLL REMITTANCE
PERS RETIREMENT SYSTEM	8201	6/27/2008	1	\$ 0.01	PERS PAYROLL REMITTANCE
PERS RETIREMENT SYSTEM	8201	6/27/2008	2	\$ 26,373.15	PERS PAYROLL REMITTANCE
				\$ 54,600.13	
PRINCIPAL LIFE INSUR COMP	8206	6/30/2008	1	\$ 2,865.34	DENTAL INSURANCE-YER
PRINCIPAL LIFE INSUR COMP	8206	6/30/2008	2	\$ 0.06	DENTAL INSURANCE-YER
PRINCIPAL LIFE INSUR COMP	8206	6/30/2008	1	\$ 134.14	DENTAL INSURANCE-YER
				\$ 2,999.54	
SEIU, LOCAL 620	8137	6/17/2008	1	\$ 359.01	UNION DUES
SEIU, LOCAL 620	8202	6/27/2008	1	\$ 359.01	UNION DUES
				\$ 718.02	
SLO CREDIT UNION	8128	6/17/2008	1	\$ 555.00	CREDIT UNION
SLO CREDIT UNION	8194	6/27/2008	1	\$ 555.00	CREDIT UNION
				\$ 1,110.00	
STATE OF CAL -DISB. UNIT	8138	6/17/2008	1	\$ 360.00	DEDUCTION-MISC 1
STATE OF CAL -DISB. UNIT	8203	6/27/2008	1	\$ 360.00	DEDUCTION-MISC 1
				\$ 720.00	

THE VARIABLE ANNUITY LIFE	8139	6/17/2008	1	\$	150.00	DEFERRED COMP -VALIC
THE VARIABLE ANNUITY LIFE	8204	6/27/2008	1	\$	150.00	DEFERRED COMP -VALIC
				\$	<u>300.00</u>	
Payroll Vendor Sub-Total				\$	<u>307,115.98</u>	
Expenditures for Month Total				\$	<u>448,695.15</u>	



ADDENDA TO MONTHLY EXPENDITURE REPORT

<i>DEPARTMENT CODES</i>	
FD	Fire Department
PM	Property Management
ADM	Administration
RC	Resource Conservation
WD	Water Department
WW	Wastewater Department
PR	Parks & Recreation

CAMBRIA COMMUNITY SERVICES DISTRICT
MINUTES OF THE REGULAR MEETING OF BOARD OF DIRECTORS
June 26, 2008 – VETERANS MEMORIAL BUILDING

- I. **Call to Order:** President Cobin called the meeting to order at 12:30 p.m. and led the pledge of allegiance. District Counsel reported no actionable items reportable at today's meeting.
Present: Directors Chaldecott, Clift, Funke-Bilu, Sanders and President Cobin
Absent: Fire Chief Bob Putney, Finance Manager Alleyne LaBossiere
Also present: General Manager Tammy Rudock, District Counsel Art Montandon, Assistant Fire Chief Mark Miller, Assistant General Manager Bryan Bode, District Engineer Bob Gresens, and District Clerk Kathy Choate.
Closed Session: District Counsel reported board met on items listed on last month's agenda, with no reports today on those items.

- II. **Agenda Review:** Consent Item VI.D. Correction to page 11, Section 27, Domestic Partners, correct Article 22 to 24.

- III. **Acknowledgements/Presentations:** Dave Flynn from SLO County Public Works presented a status report on Cambria Drive Widening/Flood Control Project to be completed by end of this year with installation of traffic signal by around November. Moonstone Beach Bridge Replacement Project is a seismic retrofit to replace and convert to concrete for long-term maintenance. As part of contract North and South signs will indicate businesses open and access points to use. County will ensure Weymouth has clear direction/signage.

Cambria CERT (Community Emergency Response Team). **Postponed to July regular meeting.**
Emergency preparedness and Evacuation plan presentation, Fire Chief Putney and Assistant Fire Chief Mark Miller. **Postponed to July regular meeting.**

- IV. **Special Reports:** Sheriff's department Resident Deputy Todd Steeb reported on vehicle thefts on Moonstone Beach and incident at Hwy 46 and 1.

- V. **Manager's and Board Reports**
 - A. Tammy Rudock summarized and presented the manager's report.
 - B. Member and Committee Reports:
 - 1. Executive Ad Hoc Committee – no report.

- VI. **Consent Agenda**
 - A. Approve expenditures for month of May 2008
 - B. Approve minutes of Board of Directors meeting, May 13 and May 22, 2008
 - C. Adopt Resolution 19-2008 Requesting CCSD 2008 Biennial Election be consolidated with San Luis Obispo County for the November 4, 2008 consolidated general election.
 - D. Adopt Resolution 20-2008 Ratifying Memorandum of Understanding with Local 4635 IAFF (International Association of Fire Fighters).

Tammy Rudock read the consent items into the record. **Director Sanders moved approval of consent agenda. Director Clift seconded. Motion passed unanimously.**
Ayes – 4, No – 0, Absent – 1 (Funke-Bilu)

VII. Regular Business

A. Receive LAFCO (Local Agency Formation Commission) presentation of DRAFT CCSD municipal Service Review (MSR). David Church, Deputy Executive Officer, LAFCO presented the Municipal Service Review.

Public Comment:

Elizabeth Bettenhausen, Cambria. Expressed concerns regarding LAFCO report.

B. Review progress on 2008 CCSD Board Goals/Objectives. Tammy Rudock presented a progress report on 2008 Board goals and objectives. Board directed general manager to bring back progress report in December 2008.

Public comment:

Elizabeth Bettenhausen, Cambria. Requested public comment at beginning and end of meetings. Available water goal and water conservation of water, cheapest and efficient

Jerry MacKinnon, Cambria. 7% savings in water, repair leaks. Add website, open communication between public and CCSD manager and specific board members.

Mary Webb, Cambria. Commented on her recent email request with three pages of questions, database for Prop 218 protest, and APN numbers.

VIII. Hearings and Appeals

A. Public hearing to consider the adoption of Resolution 21-2008 authorizing the Fire Suppression Benefit Assessment Consumer Price Index Adjustment in the amount of 2.9%. Tammy Rudock presented staff report. Board discussion followed. President Cobin continued the public hearing to next regular meeting July 24.

Director Sanders moved to continue the public hearing to the next regular meeting. Director Chaldecott seconded. Motion passed 3 – 2.

Ayes – 3, No – 2 (Clift, Funke-Bilu). Board directed staff to bring back Fire Department justifications for recommended adjustment.

Public Comment:

Amanda Rice, Cambria. Thanked directors for fiscal responsibility.

Richard DeVega, Cambria. Thanked fiscally responsibility.

Tina Dickason, Cambria. Voice of constituents, in recession, urged no vote.

Mahala Burton, Cambria. Why not subject to Prop 218?

Frank DiMicco, Cambria. Requested Fire Dept itemize budget needs. CPI adjustment, ongoing assessment. Separate capital and operating.

Mary Webb, Cambria. Thanked Directors Funke-Bilu and Clift regarding increases in assessments and rates. Urged directors to vote no.

B. Public hearing to adopt Resolution 22-2008 authorizing Mission Country proposed interim rate adjustment in the amount of 2.94%.

Tammy Rudock introduced Tom Martin to present oral report on Mission Country proposed interim rate adjustment. Tom Martin presented rate adjustment needs and associated costs.

President Cobin opened public hearing.

Public Comment:

Mary Webb, Cambria.

Amanda Rice, Cambria. Rate increase subject to Prop 218?

Mahala Burton, Cambria. Prop 218 process, commended Mission Country.

President Cobin closed public hearing. Counsel commented on Prop 218 process.

Director Sanders moved to adopt Resolution 22-2008. Director Chaldecott seconded. Motion passed unanimously. Ayes – 5, No – 0, Absent – 0.

C. Public hearing for introduction of Ordinance 02-2008 to provide for a property lien process for Mission Country Disposal to collect delinquent customer accounts. Tammy Rudock introduced the item and District Counsel summarized the process for property lien process for delinquent Mission Country customer accounts. Tom Martin commented on bad debt ratio makes a difference in rates of about 1.2%. President Cobin opened public hearing.

Public Comment:

Frank Dimicco, Cambria. Object to public agency assigning collection to CCSD.

Amanda Rice, Cambria. Why change agreement where CCSD receives payment, if Mission Country as private company is not subject to Prop 218? Opposed to ordinance.

Brad Clark, Cambria. Commented on billing procedure and requested tenants be held responsible for bad debt.

Tina Dickason, Cambria. Reconsider policy.

Amanda Rice, Cambria. Would Mission Country consider spring clean up? Toxic cleanup?

President Cobin closed public hearing. Board discussion followed. **Director Sanders moved to deny staff's recommended action. Director Funke-Bilu seconded. Ayes – 3 (Clift, Funke-Bilu, Sanders) No – 2 (Chaldecott, Cobin), Absent – 0**

IX. Public Comment

Public Comment:

Jerry McKinnon, Cambria. Commented on cut in office hours. Why don't we have a new roof on vets hall? Include a formal budget page in operating Vets Hall bldg.

Tina Dickason, Cambria. Commented on recent visit to CCSD office. (Staff presented security video of incident described.)

Elizabeth Bettenhausen, Cambria. Posed question regarding majority protest number needed for this year's Prop 218 process.

Frank DiMicco, Cambria. Page 2 July 19 Cambrian, endorsement of rate proposal.

Amanda Rice, Cambria. NCAC, chair, seeking representation in Area 5.

Richard DeVega, Cambria. Concerns regarding cost of services, address staff benefits package.

Mary Webb, Cambria. Regarding questions posed in letter to CCSD.

X. President Cobin adjourned the meeting at 4:15 to closed session.

CAMBRIA COMMUNITY SERVICES DISTRICT

TO: Board of Directors

AGENDA NO. **VI C**

FROM: Tammy Rudock, General Manager

Meeting Date: July 24, 2008 Subject: Adopt Resolution 23-2008 Rejecting
 Claim by Steven Fernandez as
 Recommended by SDRMA (Special
 District Risk Management Authority)

Recommendation:

Adopt Resolution 23-2008 as recommended by SDRMA rejecting claim by Steven Fernandez, claimant, for alleged damage resulting from the CCSD posting a discontinuance notice.

Fiscal Impact:

None.

Discussion:

This is a claim alleging \$60,000 in damages resulting from the CCSD posting a 48-hour discontinuance notice for non-payment of utility charges. The CCSD posted the notice with the escort of SLO County Sheriff Deputies because of past threats by and experience in dealing with Mr. Fernandez. Steven Fernandez alleges in his claim “defiant trespass” and “home invasion” on December 27, 2007, by the CCSD. His alleged damages in the amount of \$60,000 are not itemized.

Mr. Fernandez was arrested and subsequently incarcerated for “brandishing a weapon” at the CCSD staffer and Sheriff Deputy representatives, while they were attempting to post the 48-hour discontinuance notice at the property in question. As a result of this incident the CCSD has a restraining order against Mr. Fernandez for three years.

Any damages allegedly suffered by Mr. Fernandez were due to his own actions and not the CCSD. Therefore, the CCSD bears no responsibility to pay for damages not caused by its operations.

SDRMA provides the CCSD property and liability insurance. SDRMA recommends the CCSD formally reject the claim. Upon the CCSD’s rejection of this matter SDRMA will then handle anything further concerning this claim.

Attachment: Resolution 23-2008
 Fernandez Claim

BOARD ACTION: Date _____ Approved: _____ Denied: _____

UNANIMOUS: ___ COBIN ___ SANDERS ___ CHALDECOTT ___ CLIFT ___ FUNKE-BILU ___



CAMBRIA COMMUNITY SERVICES DISTRICT

RESOLUTION NO. 23-2008
July 24, 2008

**A RESOLUTION OF THE BOARD OF DIRECTORS
OF THE CAMBRIA COMMUNITY SERVICES DISTRICT
REJECTING CLAIM BY STEVEN FERNANDEZ PER RECOMMENDATION
BY SDRMA (SPECIAL DISTRICT RISK MANAGEMENT AUTHORITY)**

The Board of Directors of the Cambria Community Services District does hereby resolve as follows:

1. To reject claim by Steven Fernandez per Special District Risk Management Authority's recommendation.
2. The President is hereby authorized to execute this resolution on behalf of the Cambria Community Services District in support of rejecting said claim, and directs staff to send a rejection notice to Steven Fernandez, claimant, using Exhibit "C" from the Claims Manual. Said Notice shall include a Proof of Service by Mail (Exhibit "L") and be sent Certified Mail.

PASSED AND ADOPTED THIS 24th day of July 2008.

Joan Cobin, President
Board of Directors

ATTEST:

APPROVED AS TO FORM:


Kathy A. Choate
District Clerk

Arther R. Montandon
District Counsel

17 JUNE 2008

TO: CCSD - CAMBRIDGE

ATTN: TAMMY A. RUDOCK, GEN. MGR.

RE: CLAIM AGAINST CCSD EMPLOYEE ROBERT LEE REASON


DEAR MS. RUDOCK,

THIS LETTER SHALL SERVE TO INITIATE A CLAIM AGAINST YOUR EMPLOYEE MR. REASON OF THE CCSD FOR THE SUM OF \$60,000 FOR HIS DEFIANT TRESPASS AND HOME INVASION ON 27 DEC '07 @ 9:45 AM, AS WITNESSED BY MYSELF AND ONE OTHER.

PLEASE NOTE I HAVE FILED THIS CLAIM WELL WITHIN THE 180 DAY STATUTORY TIME FRAME. PLEASE RUSA ME ANY FORMS YOU MAY HAVE TO ELABORATE FURTHER.

THANK YOU VERY MUCH.

Steven P. Fernandez
2650 ARSWORTH DR.
CAMBRIDGE, MA.

93428

CAMBRIA COMMUNITY SERVICES DISTRICT

TO: Board of Directors

AGENDA NO. **VI D**

FROM: Tammy Rudock, General Manager

Meeting Date: July 24, 2008 Subject: Adopt Resolution 24-2008 Rejecting Claim by Sylvia and Tony Coluzzi per Recommendation SDRMA (Special District Risk Management Authority)

Recommendation:

Adopt Resolution 24-2008 as recommended by SDRMA rejecting claim by Sylvia and Tony Coluzzi, claimants, for property damages resulting from a CCSD fire hydrant that was hit during an automobile accident, involving private vehicles, on May 31, 2008, at the corner of Berwick and Wales in Cambria.

Fiscal Impact:

None.

Discussion:

This is a claim alleging damages resulting from a ruptured fire hydrant, which was damaged during an automobile accident on May 31, 2008, involving two privately owned vehicles. Assistant General Manager Bryan Bode inspected the property and talked with staff present during the repairs following the incident. Staff's position is that there was not damage to the property, as claimed, resulting from the water spraying out of the fire hydrant. Witnesses stated the water was spraying into the street. Mr. Bode was unable to locate any gravel on the street as a result of the run off.

Mr. Bode spoke with the claimants and expressed concern that they were attempting to bill the CCSD for all of the gravel they used to landscape their entire property instead of an amount that would seem probable as a result of some gravel being displaced by the water spray. The Coluzzis indicated they would adjust their claim.

The automobiles responsible for the damage to the fire hydrant should also be responsible for any damage to the Coluzzis' property as a result of the automobile accident. Therefore, the CCSD bears no responsibility to pay for damages not caused by its operations.

SDRMA provides the CCSD property and liability insurance. SDRMA recommends the CCSD formally reject the claim. Upon the CCSD's rejection of this matter SDRMA will then handle anything further concerning this claim.

Attachment: Resolution 24-2008; Coluzzi Claim

BOARD ACTION: Date _____ Approved: _____ Denied: _____

UNANIMOUS: ___ COBIN ___ SANDERS ___ CHALDECOTT ___ CLIFT ___ FUNKE-BILU ___



CAMBRIA COMMUNITY SERVICES DISTRICT

RESOLUTION NO. 24-2008
July 24, 2008

A RESOLUTION OF THE BOARD OF DIRECTORS
OF THE CAMBRIA COMMUNITY SERVICES DISTRICT
REJECTING CLAIM BY SYLVIA AND TONY COLUZZI
PER RECOMMENDATION BY SDRMA
(SPECIAL DISTRICT RISK MANAGEMENT AUTHORITY)

The Board of Directors of the Cambria Community Services District does hereby resolve as follows:

1. To reject claim by Sylvia and Tony Coluzzi per Special District Risk Management Authority's recommendation.
2. The President is hereby authorized to execute this resolution on behalf of the Cambria Community Services District in support of rejecting said claim, and directs staff to send a rejection notice to Sylvia and Tony Coluzzi, claimants, using Exhibit "C" from the Claims Manual. Said Notice shall include a Proof of Service by Mail (Exhibit "L") and be sent Certified Mail.

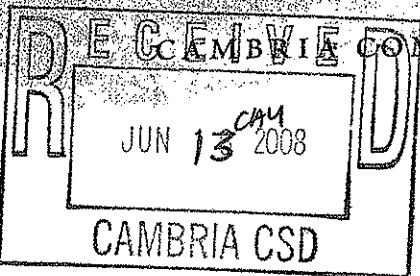
PASSED AND ADOPTED THIS 24th day of July 2008.

Joan Cobin, President
Board of Directors

Arther R. Montandon,
District Counsel

ATTEST:

Kathy A. Choate
District Clerk



CLAIM FORM

(Instructions on reverse side)

[REDACTED]

CLAIM AGAINST: CCSD

DIRECTORS:

Ilan Funke-Bilu
President

Joan Cobin
Vice President

Peter Chaldecott
Director

Gregory Sanders
Director

Donald Villeneuve
Director

Cambria Community Services District

Claimant's Name: Sylvia & Tony Coluzzi

Claimant's mailing address: [REDACTED]

Phone # [REDACTED] SS# [REDACTED] Date of Birth [REDACTED]

Date of incident/accident: May 31 2008

Date injuries, damages, or losses were discovered: SAME

Location of incident/accident: 1895 Berwick @ Wales
Cambria

(Use separate sheet if necessary to answer this question in detail.)

OFFICERS:

Tammy Rudock
General Manager

Arther R. Montandon
District Counsel

Kathy Choate
District Clerk

What are the names of any CCSD employees who caused this injury, damage or loss (if known)? FIRE HYDRANT

What specific injuries, damages, or losses did claimant receive?

Water damage to landscape

(Use separate sheet if necessary to answer this question in detail.)

What amount of money is claimant seeking or, if the amount is in excess of \$10,000, which is the appropriate court of jurisdiction? Note: If Superior and Municipal Courts are consolidated, you must represent whether it is a "limited civil case." [See Government Code § 910(f.)]

How was this amount calculated (please itemize)?

(Use separate sheet if necessary to answer this question in detail.)

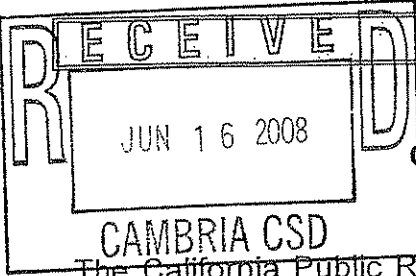
Signature: Sylvia A Coluzzi Date: 6/13/2008

If signed by representative:

Representative's Name: _____

Address: _____ Telephone #: _____

Relationship to Claimant: _____



PUBLIC RECORDS REQUEST

RESOLUTION 14-98 – APPENDIX B
CAMBRIA COMMUNITY SERVICES DISTRICT
REQUEST FOR PUBLIC RECORDS

The California Public Records Act (the "Act") was enacted to ensure public access to public records. You may request copies of specific information or materials and the District will provide this information, or an explanation of why it cannot be disclosed, as soon as possible consistent with the Act.

When submitting your request, please be as specific as possible (i.e., provide dates of reports or actions, resolution and ordinance numbers, etc.) Non-specific requests may incur additional charges for research time or may be rejected if the request would require an undue amount of research or compilation.

Name: Tony & Sylvia Coluzzi
Address: 1895 Berwick Drive
Phone: [Redacted] Fax: Bay Area
by Web

IDENTIFICATION OF DOCUMENTS

SPECIFIC NAME / DATE OF DOCUMENT	TYPE OF DOCUMENT (i.e. resolution, ordinance, report, agreement, etc.)
<u>Accident Claims Records 5/31/08 at 1895 Berwick Dr</u>	

Signature of Requestor: Sylvia & Tony Coluzzi Date: 6/13/08

This area for staff use only

Date Received: _____ Date of Response: _____
Est. Cost: _____ Amount of Deposit: _____ Refund/Additional Payment: _____
Disposition: _____

Pacific Gardens
 C. Tanner

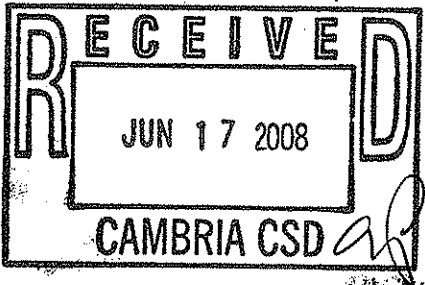
STATEMENT

DATE 6/17/08

TO Sylvia Colucci			
ADDRESS 1895 Benwick			
CITY Cambria Ca		STATE	ZIP
TERMS		AMOUNT PAID	

PLEASE RETURN THIS PORTION WITH YOUR PAYMENT

DATE	DESCRIPTION	CHARGES	CREDITS	BALANCE
	3 yds pea gravel	45		435
	delivery			60
	Labor			400
				575
				3
	Repair to landscape from traffic accident			895



edams 9621

CAMBRIA ROCK

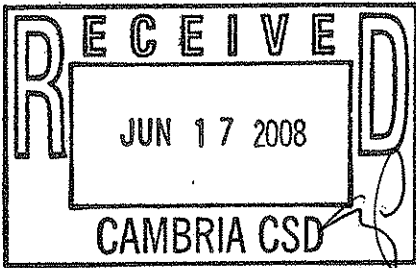
Landscape Products
Sand, Gravel, Topsoil

Fax (805) 927-1683 • (805) 927-1685

Rt 2 Box 2000 San Simeon Creek Road
Cambria, California 93428

CUST. ORDER NO.		PHONE	927-0374		DATE	6-17-08	
SOLD TO Cinuzzi							
ADDRESS 1845 BELWICK							
SOLD BY	CASH	C.O.D.	CR. CD.	ACCT.	MOSE. RET'D	PAID OUT	F.O.B.

QTY.	DESCRIPTION	PRICE	AMOUNT
2 yds	3/4" (a) 160.00 yd		320 00
1 yd	1/2" Float Rock (a) 95.00 yd		95 00
			415 00
	# Pd. (a) 0960		
	C.F.D.		
		TAX	30 09
		TOTAL	445 09



RECEIVED BY _____ THIS SLIP MUST ACCOMPANY ANY RETURNS OR CLAIMS

NO 12412

Thank You

CAMBRIA COMMUNITY SERVICES DISTRICT

TO: Board of Directors

AGENDA NO. **VI E**

FROM: Tammy Rudock, General Manager

Meeting Date: July 24, 2008

Subject: Adopt Resolution 25-2008 Rejecting Claim by Roger Andriola per Recommendation by SDRMA (Special District Risk Management Authority)

Recommendation:

Adopt Resolution 25-2008 as recommended by SDRMA rejecting claim for insufficiency by Roger Andriola, claimant, for property damage resulting from nearby lot clearing to Mr. Andriola's property.

Fiscal Impact:

None.

Discussion:

This is a claim alleging damages resulting from a privately owned lot being cleared for fire hazard fuel reduction on property bordering the claimant's property. The Assistant General Manager Bryan Bode and the Fire Chief Bob Putney both met with Mr. Andriola at the site to discuss the property and clearing being accomplished by the property owner. The CCSD does not own the property in question.

The CCSD bears no responsibility to pay for damages not caused by its operations.

SDRMA provides the CCSD property and liability insurance. SDRMA recommends the CCSD formally reject the claim for insufficiency because the claimant does not state specific damages suffered as a result of the incident claimed. Upon the CCSD's rejection of this matter SDRMA will then handle anything further concerning this claim.

Attachment: Resolution 25-2008
Andriola Claim

BOARD ACTION: Date _____ Approved: _____ Denied: _____

UNANIMOUS: ___ COBIN ___ SANDERS ___ CHALDECOTT ___ CLIFT ___ FUNKE-BILU ___



CAMBRIA COMMUNITY SERVICES DISTRICT

RESOLUTION NO. 25-2008
July 24, 2008

A RESOLUTION OF THE BOARD OF DIRECTORS
OF THE CAMBRIA COMMUNITY SERVICES DISTRICT
REJECTING CLAIM BY ROGER ANDRIOLA PER RECOMMENATION
BY SDRMA (SPECIAL DISTRICT RISK MANAGEMENT AUTHORITY)

The Board of Directors of the Cambria Community Services District does hereby resolve as follows:

1. To reject claim by Roger Andriola per Special District Risk Management Authority's recommendation.
2. The President is hereby authorized to execute this resolution on behalf of the Cambria Community Services District in support of rejecting said claim, and directs staff to send a rejection notice to Roger Andriola, claimant, using Exhibit "C" from the Claims Manual. Said Notice shall include a Proof of Service by Mail (Exhibit "L") and be sent Certified Mail.

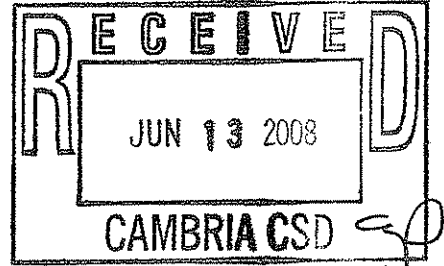
PASSED AND ADOPTED THIS 24th day of July 2008.

Joan Cobin, President
Board of Directors

Arther R. Montandon,
District Counsel

ATTEST:

Kathy A. Choate
District Clerk



CAMBRIA COMMUNITY SERVICES DISTRICT FORMAL COMPLAINT

June 13, 2008

Roger Andriola
660 Orlando Dr.
Cambria, CA 93428
Telephone: [REDACTED]

O: f-s
C: TAR
Am
Bod

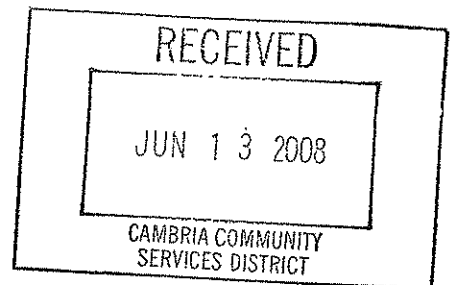
RE: MAJOR ENVIRONMENTAL DAMAGE DONE TO PARTS OF MY PROPERTY, TO THE ADJOINING LOT, AND TO THE WILDLIFE WETLANDS WATERSHED BETWEEN ORLANDO AND DRAKE STREETS ON JUNE 6, 2008.

Lot clearing activity on that date tore out all the seedling trees, removed the under story from the down slope side of all mature trees, turned a safe, beautiful, lush green, hydric soil indicator plant carpeted, wildlife wetlands, riparian watershed into a desert drought microclimate of tinder dry, fire prone, ugly torn stubble, top soil erosion, steep slope canyon hillside subsidence zone, driving out the deer, destroying their forage and habitat, killing the quail, creating a fire hazard for all who live here, a devastation allegedly allowed by the CCSD and directed by its Fire Chief, backed by threats to use governmental power to punish property owners with disproportionate fines and liens, and thus this complaint is filed with and against the CCSD.

I request that the CCSD investigate and record the appearance of the damage done, make a record of this formal complaint, and take remedial action.

Thank you kindly for your assistance on this critical matter.

Roger Andriola



CAMBRIA COMMUNITY SERVICES DISTRICT

TO: Board of Directors

AGENDA NO. **VI.F.**

FROM: Alleyne LaBossiere, Finance Manager

Meeting Date: July 24, 2008

Subject: Set Public Hearing for Next Regular Meeting to Approve the Appropriation Limit for Fiscal Year 2008-09

Recommendation:

Set a public hearing date for August 21, 2008 to review and adopt the 2008/2009 Appropriations Limit.

Fiscal Impact: None.

Discussion:

In November 1979 the voters passed Proposition 4, which places an upper limit each year on the amount of monies that can be spent on general operations from state tax revenues. The limit is based on 1978-79 base year and adjusts each year based on population growth and inflation.

In 1990 the voters approved Proposition 111, which provided new adjustment formulas making the appropriation limit more responsive to local growth issues, as well as requiring an annual review of limit calculations.

The appropriation is submitted to the audit firm and becomes part of the annual audit review.

BOARD ACTION: Date _____ Approved: _____ Denied: _____

UNANIMOUS: __COBIN__ SANDERS __ CHALDECOTT __ CLIFT __ FUNKE-BILU__

CAMBRIA COMMUNITY SERVICES DISTRICT

TO: Board of Directors

AGENDA NO. VII.A.

FROM: Bob Gresens, District Engineer

Meeting Date: July 24, 2008

Subject: Status Report on Geotechnical
Investigation/Desalination Project

Recommendations:

Receive presentation.

Fiscal Impact:

This report does not include a financial discussion. However, it is proposed that follow up geotechnical study be completed using funds that were appropriated to the Army Corps of Engineer under the Water Resources Development Act.

Discussion:

Background. In 2005, the District completed an environmental clearance process for a geotechnical investigation along the San Simeon Creek beach area as part of a data gathering effort to support a future project-level EIR/EIS for desalination. This earlier attempt at data gathering stalled during 2007 following appeals on a County-issued permit that was eventually upheld by a tied vote at the Coastal Commission level. Primary concerns expressed by the investigation permit appellants and dissenting Coastal Commissioners were associated with nesting snowy plover habitat being near the study area, and the need for a Local Coastal Program amendment to allow temporary placement of two, six-inch diameter groundwater monitoring wells between the bluff face and mean high tide line elevation. During a December 13th, 2007 reconsideration hearing over the investigation permit's appeal, several Coastal Commissioners expressed a desire to know more about the potential use of other beach areas in Cambria for desalination. As a result, CCSD staff embarked on further study to investigate other beach areas. This staff report summarizes findings related to a recently completed study of the Santa Rosa Creek beach area.

Because there was no historical depth to bedrock data on the Santa Rosa Creek beach area, further geophysical examination was deemed necessary. Staff therefore obtained permissions from the County and State Parks to conduct geophysical exploration on the Santa Rosa Creek beach along the County-owned Shamel Park beach, as well as the remaining State Parks-owned reaches of the beach. This work included ground penetrating radar as well as seismic reflection, refraction, and surface wave measurements. The seismic measurement work included the temporary placement of geophone listening probes that were evenly spaced along cables strung on top of the sand in numerous areas. Following cable and probe placement, a 20-pound sledgehammer was struck against a steel plate as a sound source. Specialized computer processing of the sound waves traveling through the underground materials was then used to develop depth to bedrock and related data. Mr. Mark Olson of Advanced

Agenda Item VII.A
July 24, 2008

Geoscience headed the geophysical investigation and was assisted in the field by CCSD staff (primarily Justin Smith, with additional assistance from Pat Clarke, Carlos Mendoza, and myself). Mr. Tim Nicely of Fugro West also served as a field geologist during the collection of samples by Precision Sampling of Richmond, California. A July 21, 2008 report by Mr. Olson provides a detailed description of the study and its findings.

Summary of Findings. The attached report Figures 1 and 2 show the locations where measurements were made along the Santa Rosa Creek beach. The main focus of the geophysical investigation was to determine the depth to bedrock of alluvial deposits over bedrock. Such deposits may include beach sands, gravels, or other finer materials. These deposits are generally deeper within "paleochannel" areas, which are ancient stream channels that have been filled in with sediments over geologic time. Besides the main Santa Rosa Creek channel to the north, two secondary paleochannels were found under the County's Shamel Park beach area. The main Santa Rosa Creek paleochannel was found in rough alignment with the creek and immediately downstream from the lagoon area.

Attached Figures 3 through 5 from the report show computer-generated plots representing cross sectional views of the beach area going from south to north. The three paleochannels, identified as A, B, and C from south to north, are also called out on these plots. The yellow line shown on these plots approximates the depth of bedrock. Based on these and other modeled data, the depths to bedrock of paleochannels A through C respectively, are estimated at about 70 to 90 feet, 50 feet, and 140 feet below the ground surface. These areas are of particular interest due to their potential application for either a horizontal subterranean intake well or a subterranean return well.

To further assess the deposited materials in this area, the seismic investigation included shear wave measurements. Such measurements are intended to provide a rough assessment of the deposited materials. In an attempt to calibrate these measurements, samples were collected within the County's beach area using a Geoprobe machine, which essentially pushes a two-inch diameter plastic tube into the sand. Unfortunately, this machine was not strong enough to reach the estimated depths to bedrock identified on Figures 3 through 5. However, based on the limited information obtained from these samples, it appears that the more permeable materials may lie in the upper areas of each paleochannel. Figures 11 through 13 from the report describe the shear wave velocities of the paleochannels and also overlay some of the Geoprobe collected data. These figures indicate the permeable materials may be limited to shear wave velocities of less than the 800 to 1000 feet per second range. However, further investigation using soil-boring equipment is needed to accurately determine the nature and depth of deposited materials in the paleochannel areas. Based on the approximated 800 to 1000 foot per second velocity limit, it appears that looser, more permeable materials may be in the upper 25 to 30 feet of paleochannel A, and the upper 40 to 60 feet of depth within the main creek paleochannel C.

Conclusions. The depth of the alluvial deposits along the Santa Rosa Creek beach area is deeper than originally anticipated. Paleochannel A to the south was the most surprising

finding to come out of this latest study, but may have relatively shallow permeable deposits when compared to its total depth to bedrock. However, its relative location may make it desirable for a return well due to it being hydraulically isolated from the main creek channel area to the north. For this reason, it should be further investigated with follow up soil borings to assess whether it could be used for a potential horizontal return well, or perhaps an intake well. The main creek paleochannel (Channel C) appears promising for a horizontal intake well. However, this channel location may need to be intersected by a well further off shore in order to avoid potential impacts to the sensitive lagoon area. Further follow up study of Channel C would include tracing its location offshore using geophysical measurements, followed by soil borings to further assess its potential use as an alternative intake location. Geo-hydraulic modeling of this data would also be necessary to optimize its placement to ensure a hydraulic connection existed with the ocean, as opposed to the more sensitive lagoon area.

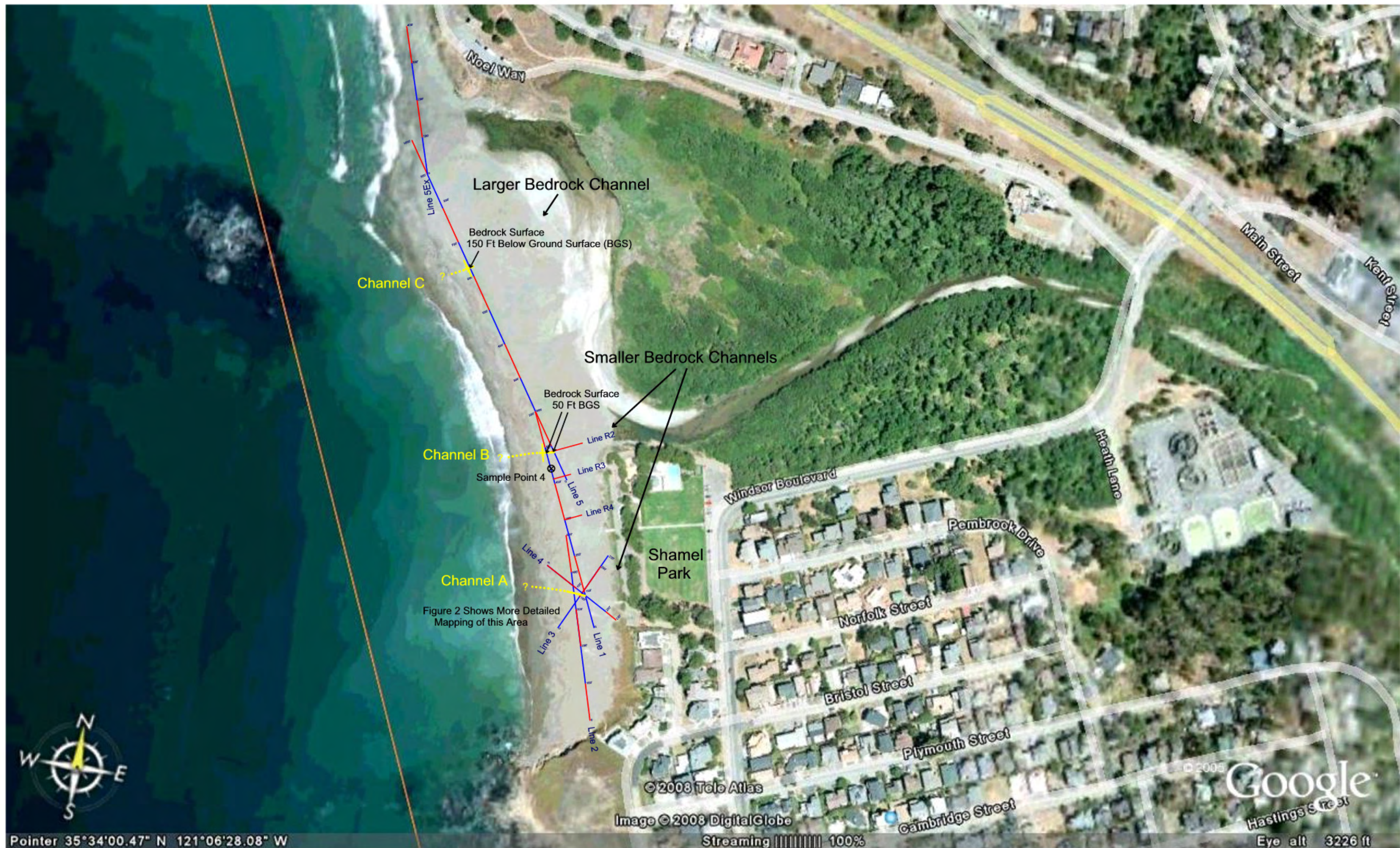
Recommendations. In view of the Coastal Commission's concerns with the San Simeon Creek location, a phased follow up geotechnical investigation is recommended. This approach would first focus on the Santa Rosa Creek paleochannels identified within the recent geophysical study to further assess and develop subterranean intake and return well alternatives. By doing so, a less sensitive area would be studied first, which is not known to have snowy plover nesting sites nor be subject to a Local Coastal Plan amendment requirement. Follow up study would include further seismic analysis of the near shore areas in order to determine the horizontal orientation of paleochannels A and C after they enter the ocean. The use of geothermal measurements may also compliment this work to further define the location of main channel C. Geotechnical work in this area would include soil borings on the beach in the proximity of paleochannels A and C, as well as pump draw down testing to define permeability. After determining the near shore location of main paleochannel C, soil boring would need to occur using either diver operated equipment or equipment elevated off of a barge or temporary work platform. Should this effort prove that the Santa Rosa Creek beach area is feasible following computer modeling, a go, no-go decision would occur before further geotechnical study of the San Simeon location.

Attachments:

- Map of testing locations (July 21, 2008 report Figures 1 and 2)
- Cross sectional views of main paleochannel areas (July 21, 2008 report Figures 3 through 5 and 11 through 13)

BOARD ACTION: Date _____ Approved: _____ Denied: _____

UNANIMOUS: __ COBIN __ SANDERS __ CHALDECOTT __ CLIFT __ FUNKE-BILU __



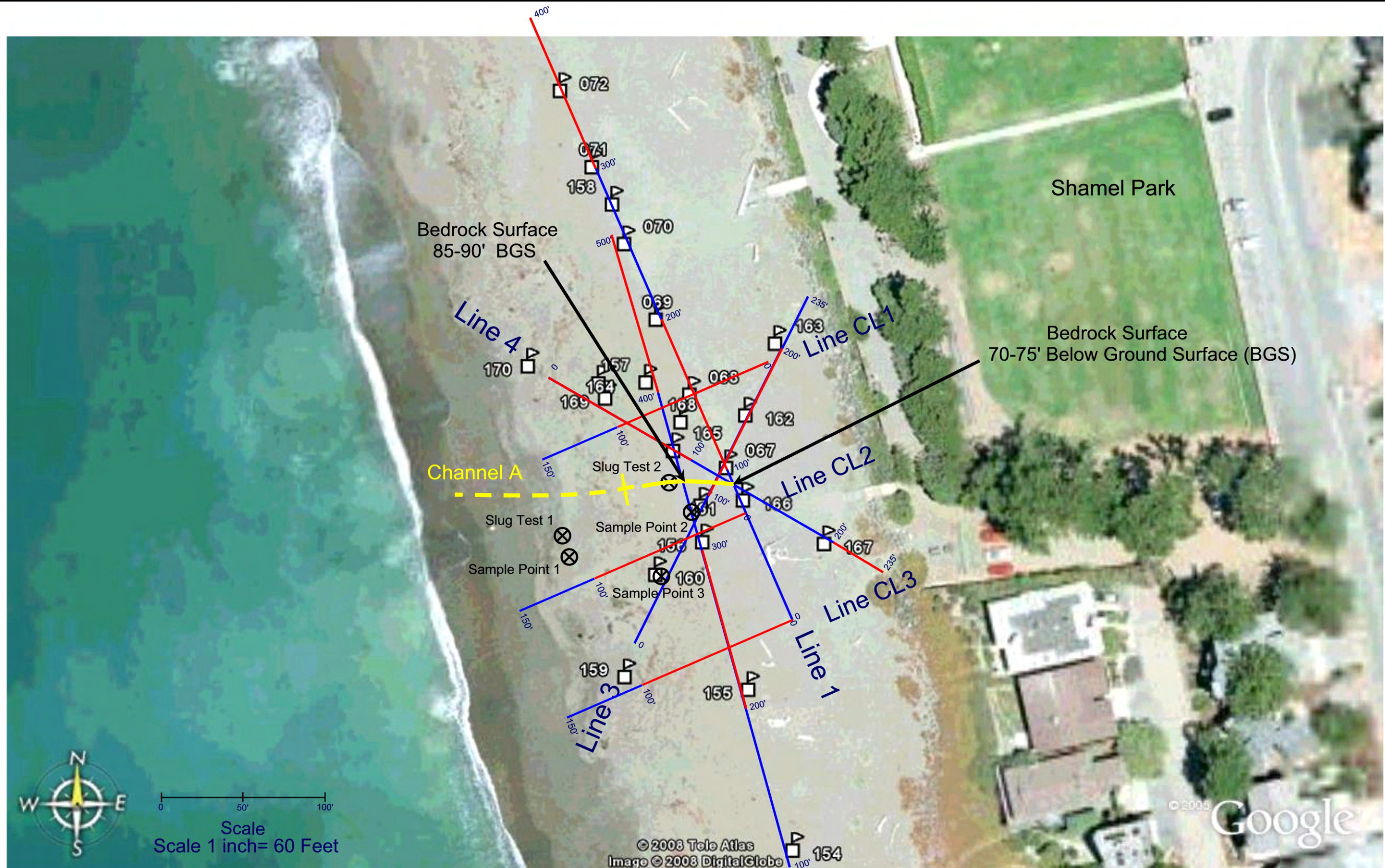
Pointer 35°34'00.47" N 121°06'28.08" W

0 100' 200'
Scale

- Interpreted Axis of Bedrock Channels
- Geoprobe Boring Locations

Site Map Showing Locations of Survey Lines 1 through 5, Line 5Ex, and Lines R2 through R4 for Subsurface Geophysical Investigation of Santa Rosa Creek Beach Area Cambria, California

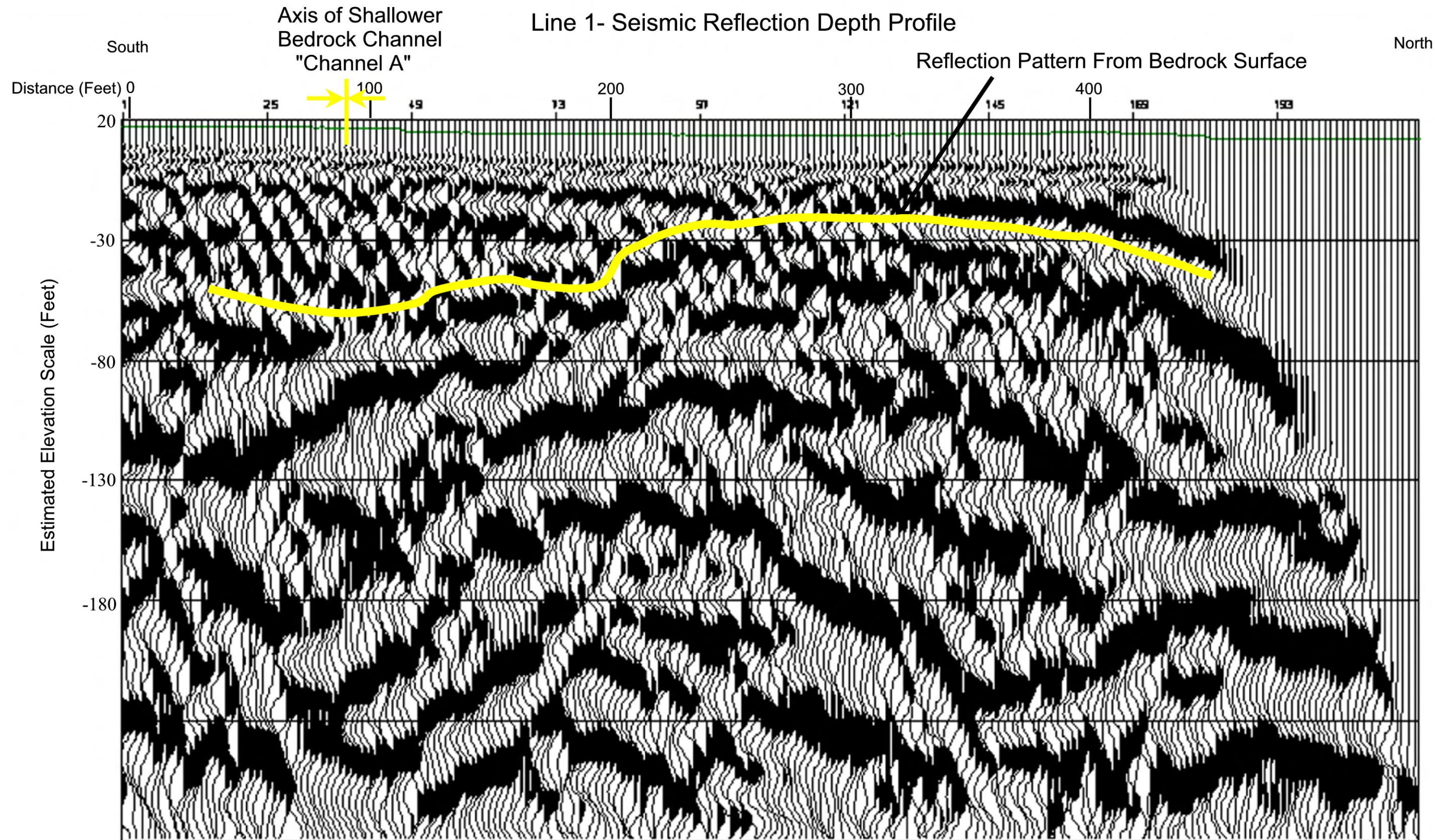
Figure 1
Advanced Geoscience, Inc.



- - - - - Interpreted Axis of Bedrock Channel
- ⊗ Geoprobe Boring Locations

Site Map Showing Detailed Mapping of Area West of Shamel Park
 Subsurface Geophysical Investigation at Santa Rosa Creek Beach
 Cambria, California

Figure 2
 Advanced Geoscience, Inc.

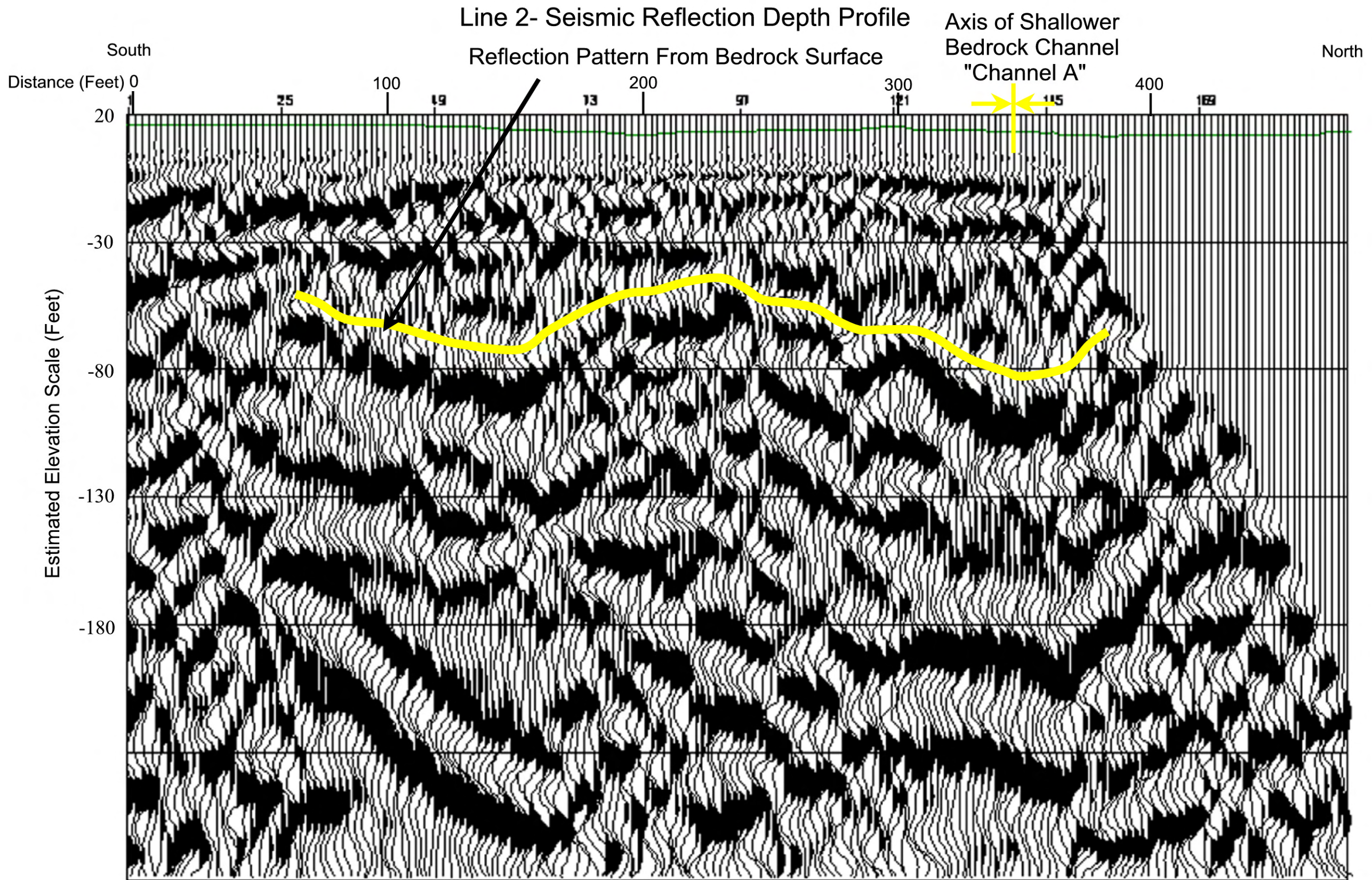


Maximum 12-Fold CMP Seismic Reflection Section
 Approximately Converted to Depth Using NMO Processing Velocities

Subsurface Geophysical Investigation at Santa Rosa Creek Beach
 Cambria, California

Horizontal and Vertical Scale 1 inch= 40 Feet

Figure 3
 Advanced Geoscience, Inc.

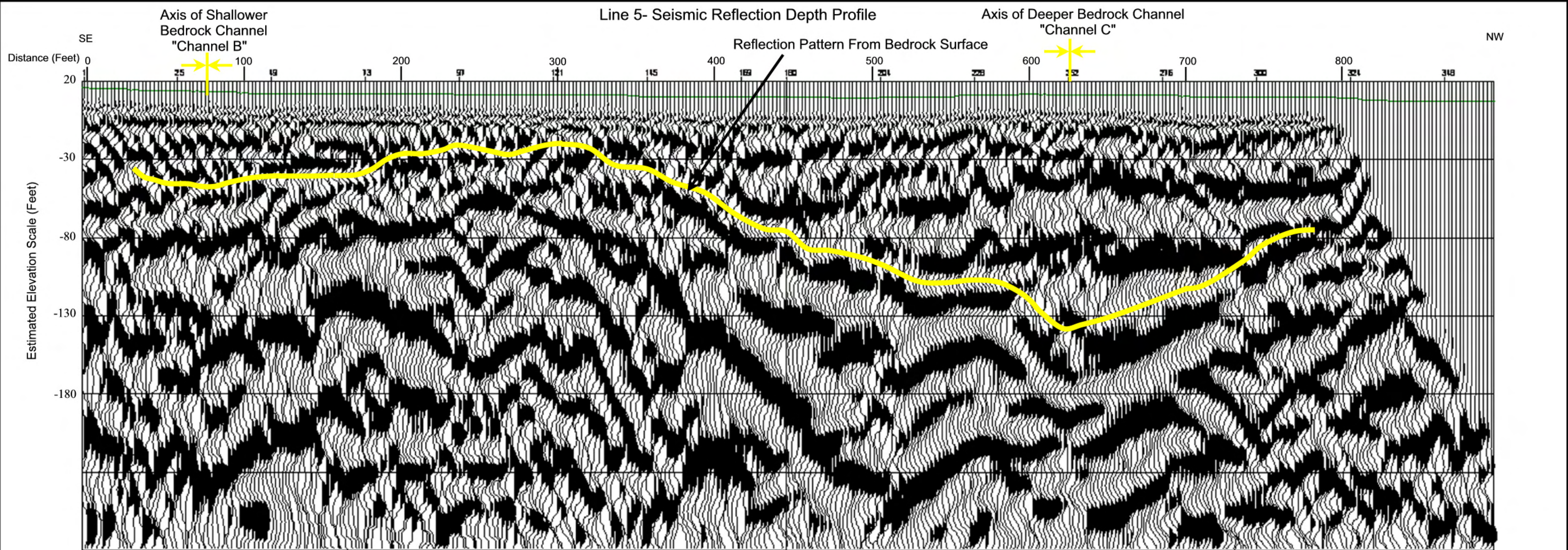


Maximum 12-Fold CMP Seismic Reflection Section
 Approximately Converted to Depth Using NMO Processing Velocities

Subsurface Geophysical Investigation at Santa Rosa Creek Beach
 Cambria, California

Horizontal and Vertical Scale 1 inch= 40 Feet

Figure 4
 Advanced Geoscience, Inc.



Maximum 12-Fold CMP Seismic Reflection Section
 Approximately Converted to Depth Using NMO Processing Velocities

Subsurface Geophysical Investigation at Santa Rosa Creek Beach
 Cambria, California

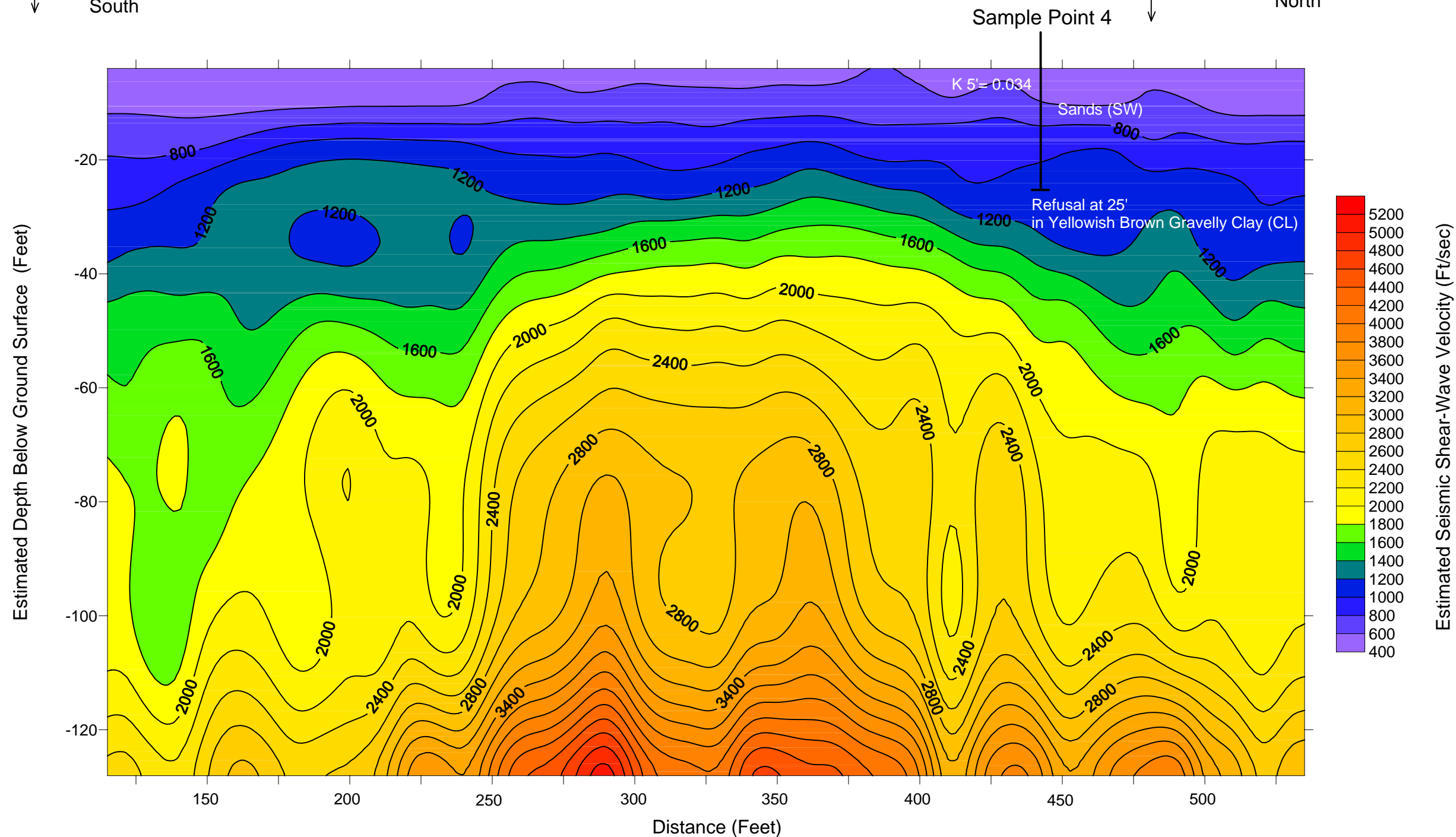
Horizontal and Vertical Scale 1 inch= 40 Feet

Figure 5
 Advanced Geoscience, Inc.

Line 1- MASW Shear-Wave Velocity Profile

Bedrock Channel
"Channel A"
↓
South

Bedrock Channel
"Channel B"
↓
North



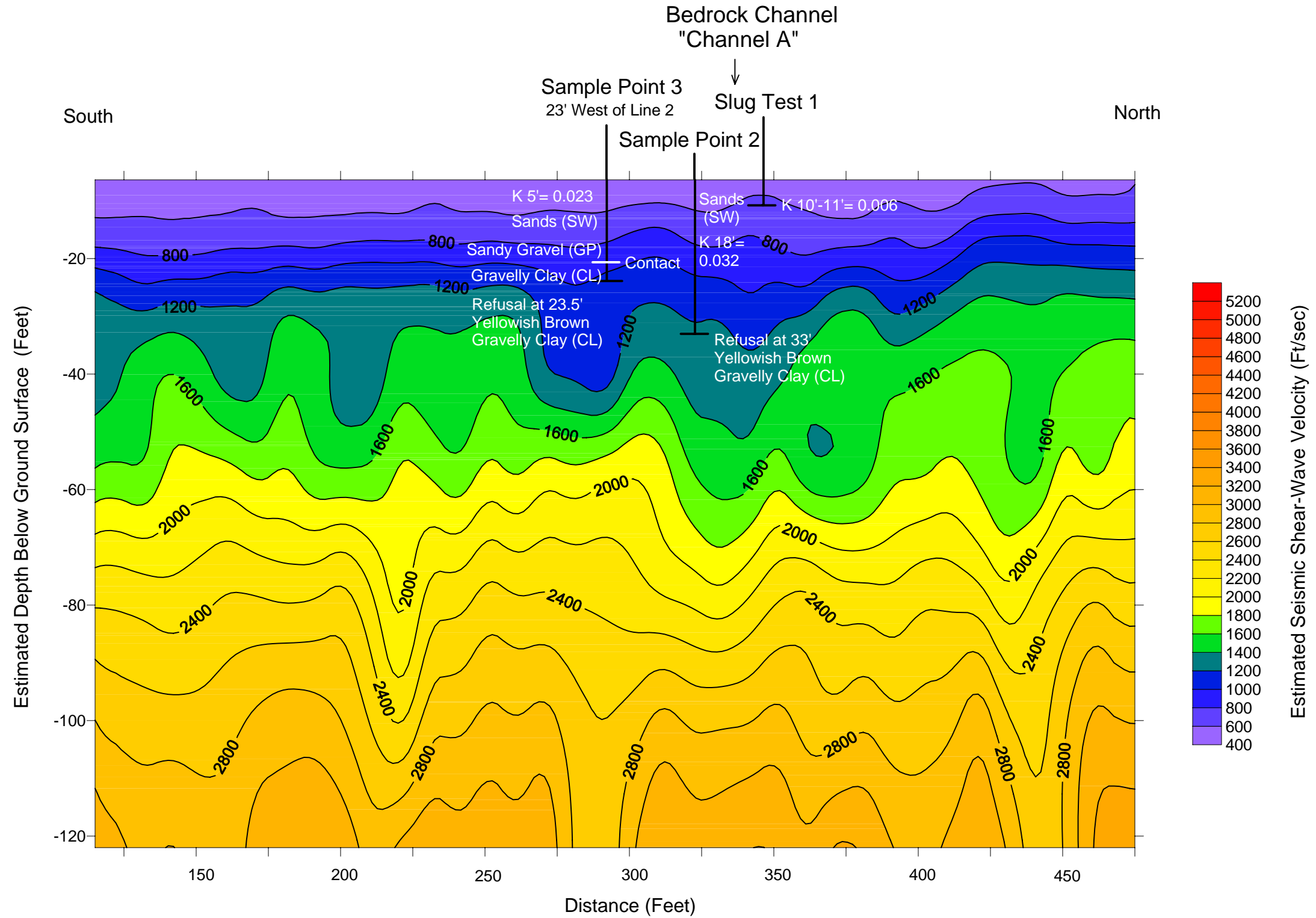
SurfSeis MASW Smoothed Vs Model Using Active 0-1.2 sec Dataset
Based on Rayleigh Wave Dispersion

Subsurface Geophysical Investigation at Santa Rosa Creek Beach
Cambria, California

Horizontal Scale 1 inch= 40 Feet
Vertical Scale 1 inch= 20 Feet (Hor. Scale x2)

Figure 11
Advanced Geoscience, Inc.

Line 2- MASW Shear-Wave Velocity Profile



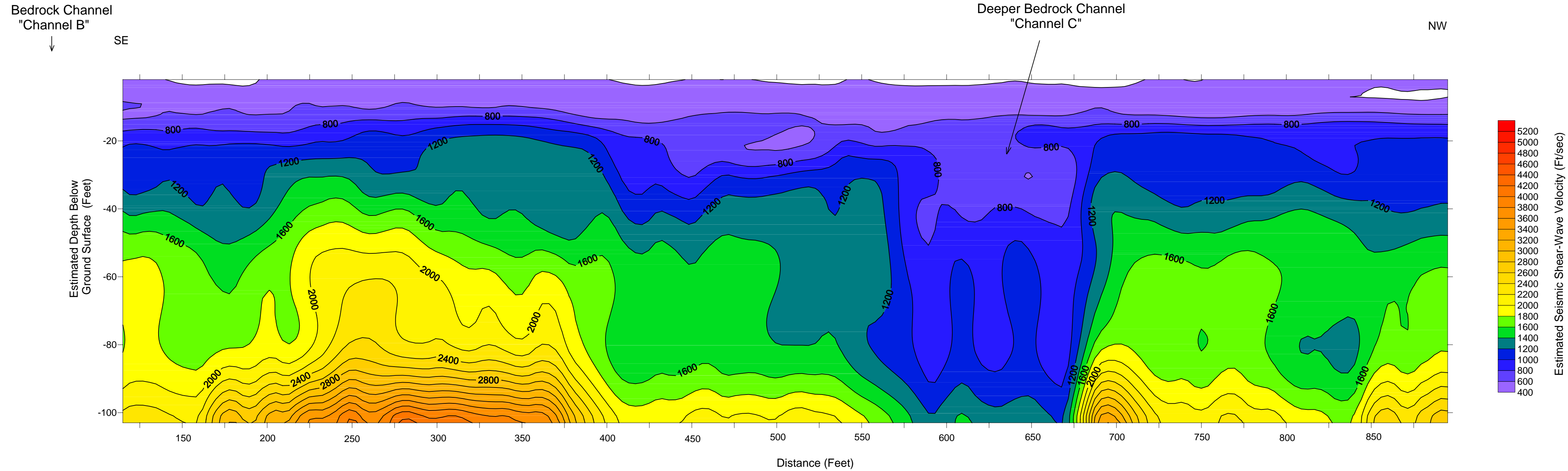
SurfSeis MASW Smoothed Vs Model Using Active 0-1.2 sec Dataset
Based on Rayleigh Wave Dispersion

Horizontal Scale 1 inch= 40 Feet
Vertical Scale 1 inch= 20 Feet (Hor. Scale x2)

Subsurface Geophysical Investigation at Santa Rosa Creek Beach
Cambria, California

Figure 12
Advanced Geoscience, Inc.

Line 5- MASW Shear-Wave Velocity Profile



SurfSeis MASW Smoothed Vs Model Using Active 0-1.2 sec Dataset
Based on Rayleigh Wave Dispersion

Horizontal Scale 1 inch= 40 Feet
Vertical Scale 1 inch= 20 Feet (Hor. Scale x2)

Subsurface Geophysical Investigation at Santa Rosa Creek Beach
Cambria, California

Figure 13
Advanced Geoscience, Inc.

CAMBRIA COMMUNITY SERVICES DISTRICT

TO: Board of Directors

AGENDA NO. **VIII.A.**

FROM: Tammy Rudock, General Manager

Meeting Date: June 26, 2008 Subject: Continued Public Hearing to Consider Adoption of Resolution 21-2008 Authorizing a Fire Suppression Benefit Assessment Consumer Price Index (CPI) Adjustment in the Amount of 2.9% for FY 2008-2009

Recommendations:

1. Receive staff report.
2. Open public hearing.
3. Receive public comment.
4. Close public hearing.
5.
 - A. Adopt Resolution 21-2008 authorizing a 2.9% CPI adjustment in the existing Fire Suppression Benefit Assessment rates, effective July 1, 2008, in compliance with Resolution 27-2003 and the related Engineer's Report; or
 - B. Approve maintaining the existing Fire Suppression Benefit Assessment rates for FY 2008/2009, and direct staff to bring back the appropriate resolution.

Fiscal Impact:

5.A. Resolution 21-2008: \$11,109 increased Fire Suppression Benefit Assessment revenues for CCSD Fire Department operations.

5.B. Maintaining existing Fire Suppression Benefit Assessment rates for FY 2008/2009: \$11,109 decrease in Fire Suppression Benefit Assessment revenues budgeted for the CCSD Fire Department operations.

Discussion:

Last month's staff report is attached for reference. Staff recommended a 2.9% CPI increase to the Fire Suppression Benefit Assessment because of expected increases in operational costs.

Expected increases to operations costs for the CCSD were assumed during the budget preparation process. A factor of 4% was assumed for CPI adjustments to operational line items. Much like the report presented last month by Tom Martin of Mission Country Disposal, the CCSD Fire Department expects a significant increase in fuel costs to operate the fire engines and emergency apparatus and related equipment. Further projected increases in Fire Department operational costs include personnel costs, fuel, electricity, natural gas, telephone, cellular, internet service, data communications (2-way radios), vehicle maintenance, emergency medical supplies, and operating supplies.

In response to Director Cliff's inquiry about the projected FY 2008/2009 Fire Department operating surplus (\$250,219), this is as a result of maintaining an 80% distribution of Property Tax revenues received by the CCSD for Fire Department operations. (See attached pie charts presented during the FY 2008/2009 Budget Workshop and hearing.) Staff recommended maintaining the same percentage distribution of property tax revenues (as in previous years) in order to protect those funds from potential future grabs for supplemental ERAF by the State of California.

Please reference the attached Fire Department budget and note Property Tax revenues allocated for FY 2008/2009: \$1,571,040. All other projected revenue sources are itemized separately, including the Fire Suppression Benefit Assessment.

Total revenues projected for FY 2008/2009 for the Fire Department: \$2,128,111.

Total expenditures projected for FY 2008/2009 for the Fire Department: \$1,877,892.

Staff could have allocated a lesser percentage of Property Tax revenues to the Fire Department thereby reducing its total revenues to match its projected expenditures.

Stated another way, the CCSD has three funds: Government Funds (General Funds); Water Enterprise Funds; and Wastewater Enterprise Funds. Please refer to the attached summary from the approved budget entitled "Governmental Funds-By Department." As you can see, when looking at the "big picture" for the departments funded by Governmental Funds, the projected surplus in FY 2008/2009 is \$6,730. That is a slim margin, and that includes a CPI increase in the Fire Suppression Benefit Assessment. Without it, something will have to be eliminated from these Governmental Funds' operations or there will be a shortfall (projected expenditures will exceed projected revenues).

- Attachments: 6/26/07 Staff Report
- Property Tax Allocation for FY 2008/2009 and FY 2009/2010 Pie Charts
- Fire Department Budget
- Budget Summary of Governmental Funds-By Department

BOARD ACTION: Date _____ Approved: _____ Denied: _____

UNANIMOUS: __ COBIN __ SANDERS __ CHALDECOTT __ FUNKE-BILU __ CLIFT __



CAMBRIA COMMUNITY SERVICES DISTRICT

RESOLUTION NO. 21-2008
July 24, 2008

A RESOLUTION OF THE BOARD OF DIRECTORS
OF THE CAMBRIA COMMUNITY SERVICES DISTRICT
AUTHORIZING THE FIRE SUPPRESSION BENEFIT ASSESSMENT
CONSUMER PRICE INDEX ADJUSTMENT
IN THE AMOUNT OF 2.9% FOR FY 2008/2009

The Board of Directors of the Cambria Community Services District does hereby resolve as follows:

1. Authorizes the Fire Suppression Benefit Assessment Consumer Price Index Adjustment in the amount of 2.9%, effective July 1, 2008, in compliance with Resolution 27-2003 and the related Engineer's Report.

2. Thus, approves the following assessments for FY 2008/2009:
 - Vacant Lot \$ 16.72
 - Single Family Residence < 3600 sq. ft. \$ 83.60
 - Single Family Residence > 3600 sq. ft. \$125.40
 - Multi-Family Residence per Dwelling Unit \$ 41.80
 - Commercial Range \$250.66–\$2,129.18

PASSED AND ADOPTED THIS 24th day of July 2008.

Joan Cobin, President
Board of Directors

APPROVED AS TO FORM:

Arther R. Montandon, District Counsel

ATTEST:

Kathy A. Choate, District Clerk

CAMBRIA COMMUNITY SERVICES DISTRICT

TO: Board of Directors

AGENDA NO. **VIII.A.**

FROM: Tammy Rudock, General Manager
 Alleyne LaBossiere, Finance Manager
 Bob Putney, Fire Chief

Meeting Date: June 26, 2008 Subject: Public Hearing to Consider Adoption of Resolution 21-2008 Authorizing a Fire Suppression Benefit Assessment Consumer Price Index (CPI) Adjustment in the Amount of 2.9% for FY 2008-2009

Recommendations:

1. Receive staff report.
2. Open public hearing.
3. Receive public comment.
4. Close public hearing.
5. Adopt Resolution 21-2008 authorizing a 2.9% CPI adjustment in the existing Fire Suppression Assessment Benefit rates, effective July 1, 2008, in compliance with Resolution 27-2003 and the related Engineer's Report.

Fiscal Impact:

Increases the annual fire suppression assessment benefit revenue by \$11,109. The Fire Suppression Benefit provides supplemental funding for Fire Department operations. Adoption of Resolution 21-2008 generating an additional \$11,109 in revenue provides a total of \$394,179 for FY 2008/2009.

Discussion:

CCSD Resolution 27-2003 confirmed the special benefit assessment for fire suppression. On or before July 1st of each subsequent fiscal year, and pursuant to Government Code §§ 50078 et seq., the assessment may be increased for the ensuing year based upon the Consumer Price Index for the Los Angeles/Anaheim/Riverside area not to exceed 5.4%. The State of California Division of Labor Statistics & Research recorded a 2.9% increase for the designated area for the fiscal year ending June 30, 2007.

The amount charged is based on the base unit, which is \$8.36 for FY 2008/2009.

The proposed range of assessments compared with existing rates is as follows:

	<u>FY 2008/2009</u>	<u>FY 2007/2008</u>
▪ Vacant Lot	\$ 16.72	\$ 16.24
▪ Single Family Residence < 3600 sq. ft.	\$ 83.60	\$ 81.20
▪ Single Family Residence > 3600 sq. ft.	\$125.40	\$121.80
▪ Multi-Family Residence per Dwelling Unit	\$ 41.80	\$ 40.60
▪ Commercial Range	\$250.66-\$2,129.18	\$243.60-\$2,069.18

BOARD ACTION: Date _____ Approved: _____ Denied: _____

UNANIMOUS: __ COBIN __ SANDERS __ CHALDECOTT __ FUNKE-BILU __ CLIFT __

**CAMBRIA COMMUNITY SERVICES DISTRICT
 FY 2008-2009 AND 2009-2010 OPERATING BUDGETS
 GENERAL FUND/FIRE DEPARTMENT
 ADOPTED MAY 22, 2008**

REVENUE

DESCRIPTION	2006-2007 ACTUAL	2007-2008 BUDGETED	2007-2008 ESTIMATED	2008-2009 ADOPTED	2009-2010 ADOPTED
PROPERTY TAX	(1,469,879)	(1,525,606)	(1,540,235)	(1,571,040)	(1,602,460)
FIRE BENEFIT ASSESSMENT	(364,039)	(383,070)	(383,070)	(402,224)	(422,335)
WEED ABATE/FUEL REDUCTION	(116,464)	(118,848)	(118,848)	(105,848)	(117,000)
CDF/INSPECTION FEES	(14,908)	(15,000)	(22,700)	(23,000)	(23,000)
INTEREST INCOME	(9,572)	(10,250)	(10,250)	(5,000)	(5,000)
GRANT REVENUE	0	(68,191)	(104,705)	0	0
CHEVRON SETTLEMENT	(46,919)	0	0	0	0
OTHER	(162)	(150)	(22,700)	(21,000)	(1,000)
TOTAL REVENUE	(2,021,943)	(2,121,115)	(2,202,508)	(2,128,111)	(2,170,795)

EXPENDITURES

SALARY & WAGES	796,017	812,161	855,966	810,880	806,908
BENEFITS	532,420	541,748	553,508	500,380	504,759
PERSONNEL COSTS	1,328,437	1,353,909	1,409,474	1,311,260	1,311,667
INSURANCE	2,460	3,135	2,032	2,134	2,240
MAINTENANCE & REPAIRS	48,279	62,786	76,159	70,204	65,092
OFFICE SUPPLIES & EQUIPMENT	20,198	17,798	18,568	17,300	27,192
DUES & FEES	3,666	3,813	6,798	5,540	5,767
UTILITIES	24,087	26,854	25,989	28,811	29,992
PROFESSIONAL SERVICES	5,745	5,975	45,237	26,065	30,308
FUEL HAZARD CONTRACT	93,872	78,848	78,848	90,000	94,000
OPERATING SUPPLIES/EQUIPMENT	58,010	54,193	72,820	40,505	41,285
TRAINING & TRAVEL	16,963	17,642	24,170	21,058	25,114
PUBLIC OUTREACH/EDUCATION	5,114	3,692	2,518	2,005	2,205
PREPAREDNESS	6,044	6,121	4,249	14,591	5,596
EQUIPMENT LEASE	2,332	2,300	2,300	2,300	2,300
DEBT SERVICE	49,066	49,066	49,066	49,066	49,066
ALLOCATED OVERHEAD	166,211	181,891	185,683	197,053	197,004
TOTAL OPERATING EXPENDITURES	502,047	514,114	594,436	566,632	577,161
CAPITAL OUTLAY	65,152	0	0	0	0
TOTAL EXPENDITURES	1,895,636	1,868,023	2,003,910	1,877,892	1,888,828
TOTAL REVENUE LESS EXPENDITURES	(126,307)	(253,092)	(198,599)	(250,219)	(281,967)

**CAMBRIA COMMUNITY SERVICES DISTRICT
 FY 2008-2009 AND 2009-2010 OPERATING BUDGETS
 GOVERNMENTAL FUNDS-BY DEPARTMENT
 ADOPTED MAY 22, 2008**

REVENUE

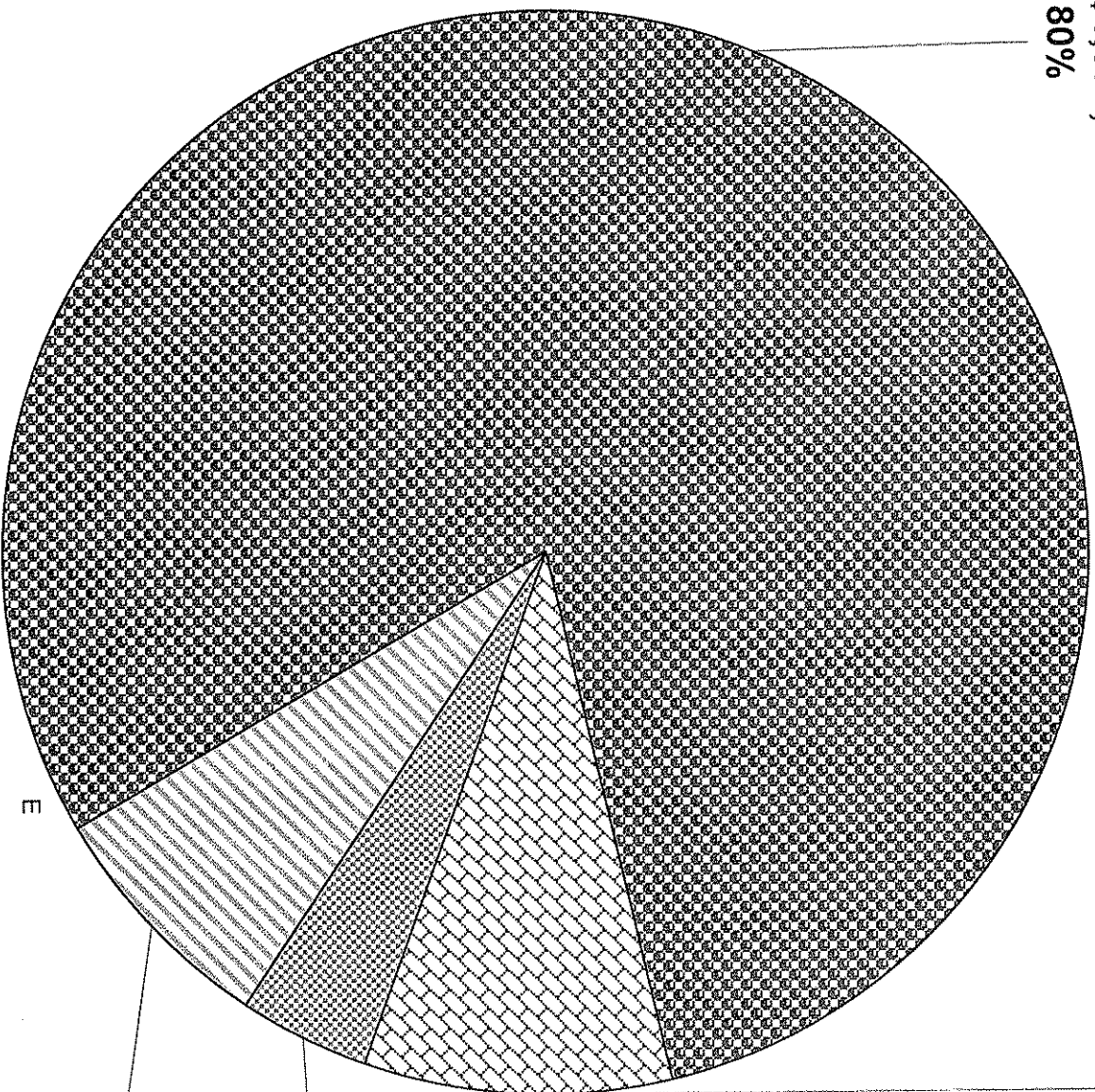
DESCRIPTION	2006-2007 ACTUAL	2007-2008 BUDGETED	2007-2008 ESTIMATED	2008-2009 ADOPTED	2009-2010 ADOPTED
FIRE DEPARTMENT	(2,021,943)	(2,121,115)	(2,202,508)	(2,128,111)	(2,170,795)
ADMINISTRATION	(1,791,619)	(1,738,165)	(1,529,099)	(1,505,612)	(1,545,996)
FACILITIES AND RESOURCES	(407,961)	(109,312)	(113,431)	(118,656)	(125,224)
PARKS AND RECREATION	(592,071)	(223,598)	(205,087)	(227,376)	(143,861)
RESOURCE CONSERVATION	(105,055)	(85,116)	(120,000)	(115,000)	(135,000)
TOTAL REVENUE	(4,918,649)	(4,277,306)	(4,170,125)	(4,094,755)	(4,120,876)

EXPENDITURES

PERSONNEL COSTS					
FIRE DEPARTMENT	1,328,437	1,353,909	1,409,474	1,311,260	1,311,667
ADMINISTRATION	1,167,396	1,277,721	974,943	1,002,759	1,081,405
FACILITIES AND RESOURCES	244,639	261,695	254,379	277,142	284,085
RESOURCE CONSERVATION	56,075	61,222	64,262	68,727	71,810
TOTAL PERSONNEL COSTS	2,796,547	2,954,547	2,703,058	2,659,888	2,748,967
OPERATING COSTS					
FIRE DEPARTMENT	502,047	514,114	594,436	566,632	577,161
ADMINISTRATION	491,570	467,559	489,852	516,306	505,357
FACILITIES AND RESOURCES	184,679	127,898	134,746	152,695	150,017
PARKS AND RECREATION	602,131	188,525	162,906	77,243	74,426
RESOURCE CONSERVATION	67,747	95,159	67,541	115,260	53,800
TOTAL OPERATING EXPENDITURES	1,848,174	1,393,255	1,449,480	1,428,136	1,360,761
CAPITAL OUTLAY					
FIRE DEPARTMENT	65,152	0	0	0	0
TOTAL CAPITAL OUTLAY	65,152	0	0	0	0
TOTAL EXPENDITURES	4,709,873	4,347,802	4,152,538	4,088,024	4,109,728
TOTAL REVENUE LESS EXPENDITURES- (SURPLUS)/DEFICIT	(208,776)	70,496	(17,587)	(6,730)	(11,148)

CAMBRIA COMMUNITY SERVICES DISTRICT GENERAL PROPERTY TAX ALLOCATION FOR THE 2008-2009 FISCAL YEAR-PROPOSED

FIRE-\$1,571,040
80%



	FIRE-\$1,571,040
	ADMINISTRATION- \$178,665
	FACILITIES AND RESOURCES-\$78,356
	PARKS AND RECREATION-\$141,041

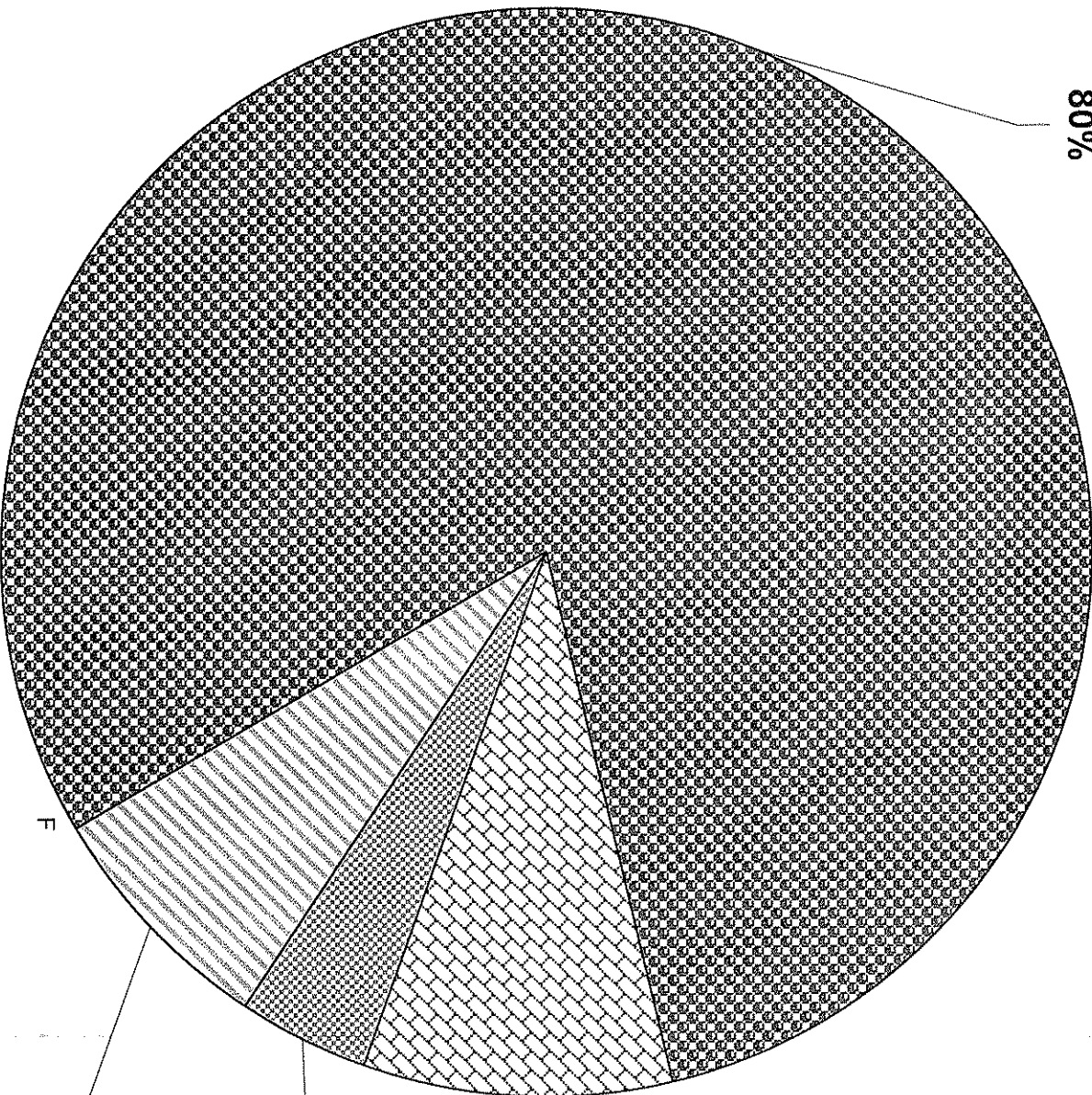
**ADMINISTRATION-
\$178,665
9%**

**FACILITIES AND
RESOURCES-
\$78,356
4%**

**PARKS AND
RECREATION-
\$141,041
7%**

CAMBRIA COMMUNITY SERVICES DISTRICT GENERAL PROPERTY TAX ALLOCATION FOR THE 2009-2010 FISCAL YEAR-PROPOSED

**FIRE-\$1,602,460
80%**



- FIRE-\$1,602,460
- ADMINISTRATION-\$182,239
- FACILITIES AND RESOURCES-\$79,924
- PARKS AND RECREATION-\$143,861

**ADMINISTRATION-
\$182,239
9%**

**FACILITIES AND
RESOURCES-
\$79,924
4%**

**PARKS AND
RECREATION-
\$143,861
7%**